

St Briavels Parochial C of E Primary School Newsletter

No 87 March 30th 2023

Letter from Mrs Frey



Dear Families,

Again the term has flown by and we find ourselves at the holidays. School is always a busy place with much going on and no two days are alike.

Last week we had our hugely successful annual Federation Day where both of our schools came together at St Briavels to prepare for this year's Malvern garden. It was wonderful to see all of the children come together and work together to create pieces that will be included in our final design. We must of course thank Mrs Kilty and her team for all of her hard work in putting the event together and ensuring it ran so smoothly.

Today, we have enjoyed a wonderful Easter Trail around the village and despite the weather, the children have had a super time engaging in the Easter story at 12 different stations. You may notice all of our crosses on the lawn in front of the school as you come to pick up at the end of the day. Again, we must offer our thanks to Rosie Rees and her team for organising this event for us.

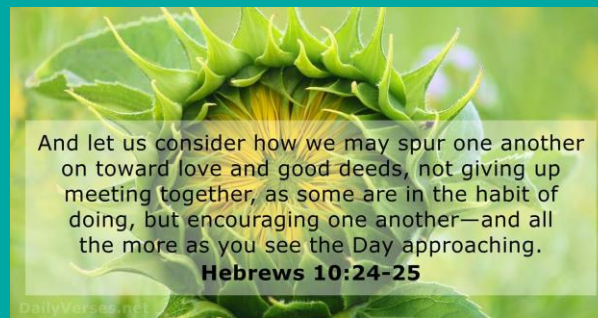
Finally, we are looking ahead to the coronation of King Charles III in a few weeks time. I have been working with our local community who are planning a wonder array of events over the weekend for our village and our new PTA on an event in school on Friday 5th May where families will be invited to join us at 2:45pm for a crown parade – more details will be with you after the holidays but save the date in your diaries for now.

The community we work and live in is such a precious part of who we are and their support comes in so many different forms. We couldn't be more grateful for you, our parents and carers, who make us who we are everyday and the wider community who come together for those special occasions to support and cheer us on. This reminds me of a biblical verse taken from Hebrews 10:24-25, "And let us consider how we may spur one another on towards love and good deeds, not giving up on meeting together, as some are in the habit of doing, but encouraging one another; and all the more as you see the day approaching."

Wishing you all a restful and enjoyable Easter.

With kindest regards

Natalie Frey



Sunflowers



The pre-school children had an amazing visit to St Briavels castle.



1 - We had lunch in the old stables where we think the hedgehogs, slugs and kangaroos would have lived.



2 - We went into the banquet room to see where King John and his guests would have eaten.



3 - We heard how the castle was a court house long ago.



4 - We also went into the prison to see all of the writing and drawings on the wall from the prisoners.



5 - The children visited the old kitchen and found out all about how a very, very long time ago a dog ran in a wooden wheel which would turn a spit to cook the pig.

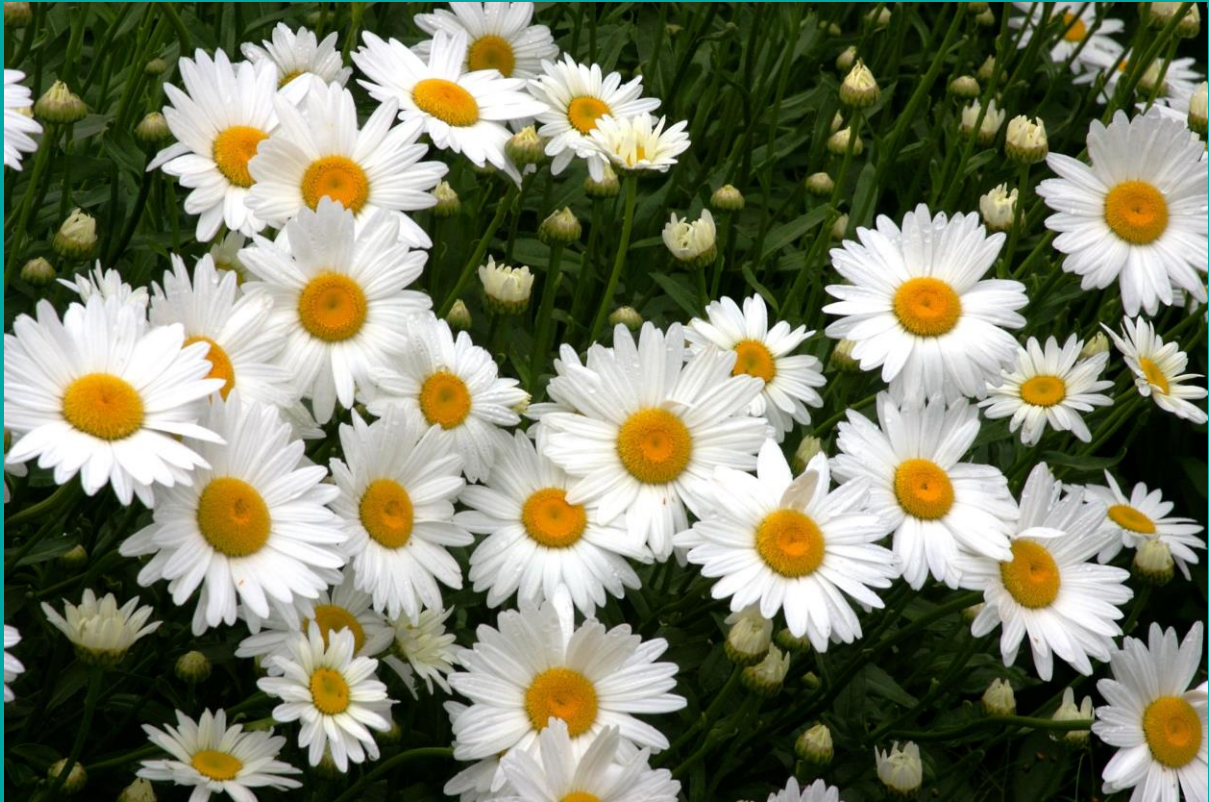


6 - The children have enjoyed creating their own music with Annie, using a variety of instruments.



7 - The children having been collecting and observing the bugs found in forest school.

Daisy Class



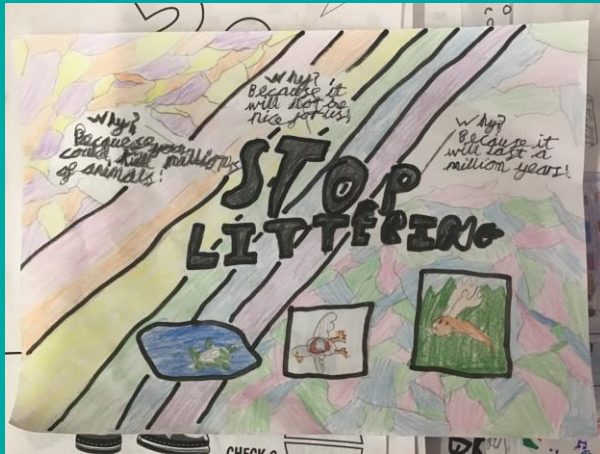
What a busy Spring term we have had! The children engaged enthusiastically with our history topic about Queen Elizabeth I and II, and the art work linked to the Queen turned out amazingly. We have written animal stories inspired by African folk tales so make sure to ask your child to tell you their own version!





Poppy Class





Poppy class have really enjoyed learning about the circus (the setting in our class book). We made our own juggling balls and showed great resilience trying to master the technique! The class have all created their own spell poems based on the book and have shown amazing creativity and imagination.

Poppy class were fantastic eco-warriors this week, when we went to St Briavels park and undertook a litter pick. We were all very shocked at the amount of plastic we found and the children were then inspired to create anti-litter posters.

Mrs Kear

Speedwell Class

Speedwell class have really enjoyed our term. They especially liked learning poetry from Roald Dahl's Revolting Rhymes and I would encourage parents to log into SeeSaw and watch their children reading aloud a poem.

Pupils also really enjoyed the chance to visit the Cathedral and Mosque in Gloucester and through RE learnt about how the five Pillars of Islam affect Muslims. We've also focused on atlas work in Geography and they have worked hard at identifying human and physical geographic features of South America. We even got the chance to tie dye T-shirts in D&T!

We look forward to seeing what the next term brings.

Foxglove Class

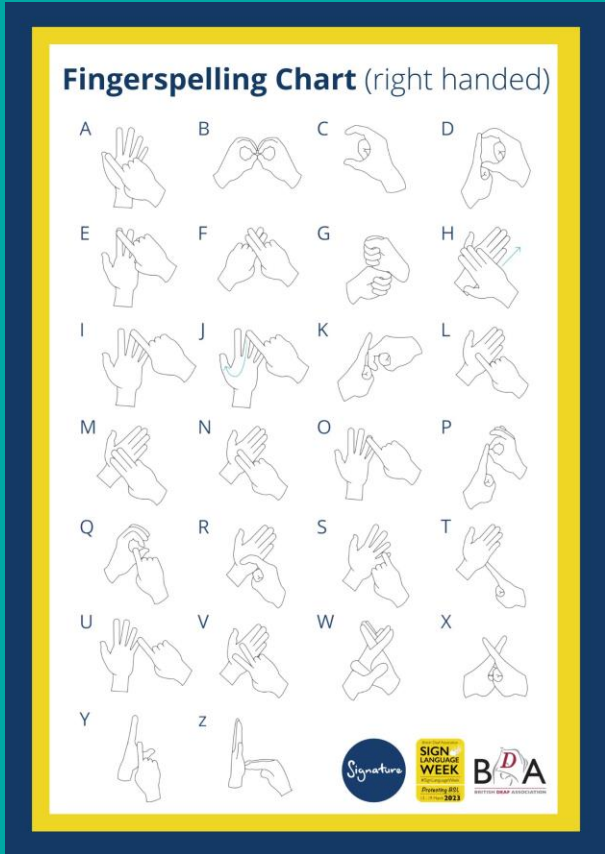


This term Foxglove had been very busy. We have learnt how to play different Samba instruments and had a great morning out at Cheltenham Town Hall. In Geography we have been creating maps and exploring Europe and South America. In RE we have learnt about the 5 Pillars of Islam and learnt more about Ramadan and Hajj.

We have written a narrative using the book *The Water Tower* and a non chronological report about robots after reading *The Last Human*.

Foxglove really enjoyed learning sign language following a lesson during British Sign Language Week. The children are continuing to practise what they have learnt and have conversations with each other.





ELSA news





This week I've spent some time updating my ELSA board in the school with a nice, new display for the children to have a think about all their amazing qualities and encourage them to use their strengths.

This term, some children have been looking at resilience and picking out their strengths to focus on and how they can use them everyday. One student chose 'bravery' and was lucky enough to be treated to a professional singing lesson.

Lorna Hill

PTA

The new St Briavels PTA Committee are excited to announce the following events:

Easter holiday sponsored readathon - During the Easter break we will be encouraging our family's to take part in our sponsored readathon, exploring their love of stories , expanding their imaginations and encouraging reading whilst being sponsored by friends and family

5th May - Decorate a Crown competition for the Coronation of King Charles. On the 5th May the students will be getting creative and decorating paper crowns for a Coronation Parade

For the Summer terms we have many more exciting events in the pipeline which we can't wait to tell you more about soon!

Happy Easter

From Gemma, Jade, Emily and Nina - PTA Committee

Choir



Our choir is really coming together as a group and the children had the chance this week to show their parents what we've been practising. We hope you enjoyed our songs!

We are being inundated with requests to perform at events next term and would love your support if you get the chance to come along to any of them.

- We're featuring at an evening which the Forest All Male Voice Choir are holding at the Assembly Rooms on Friday 21st April – show starts at 630pm, tickets are £6 for adults (free for children). They have kindly said that they will donate all proceeds from the event to our choir which is just fantastic. We are looking for a couple of volunteers to do the teas and coffees on the evening if you have a spare hour plus we'd like to get a raffle together and would really appreciate any donations...
- We're going to pop along to the Memory Café in St Briavels on the 19th April with a couple of our classic songs.
- We managed to secure a donation from the Rotary Club for £500 and they've asked if we could come to their monthly dinner at Forest Hills Golf Club on Tuesday 9th May to accept the cheque and sing a couple of songs for their members.
- And lastly we've been asked to sing at the St Briavels Carnival in June! A huge thank you to Olivia Dance who is our pianist and music lead and to Jo Davies and Charlotte Bishop for being part of our musical team! And a HUGE round of applause for our talented and enthusiastic children for all their hard work!

Claire Gilmour

Sporting Success!

A group of Year 5/6 girls from St Briavels and Redbrook took part in a Prostars Football tournament and won. They played 3 teams in a group stage and then went through to the semi-final where they won, after a nail-biting penalty shootout. They went on to win the final and came away with a cup.



Wildlife Success!

Four year 5 and 6 girls took part in a nature quiz at Forest View against 2 other schools and they came out victorious. They are now through to the next round. Well done girls.



Thank you!

Purple Day Thanks





A huge thank you to everyone for their support on Purple Day. We were able to raise £282.00 and this money will go towards providing a SATS monitor for the Daisy Garland charity. We are immensely proud of Darcey for proposing this idea and all the children were incredibly supportive of this event.

Huge thanks.

Mrs Kear

Artspace Cinderford Thanks



Thank you to Artspace in Cinderford. Over the last two terms they have worked with a group of KS2 children to learn and explore a range of techniques for building sculpture. The children have really enjoyed the sessions and were extremely positive about the skills they have learnt.

Malvern Garden Competition Update



On Friday 10th March we held a very successful Malvern Fundraiser. The Pig Race was attended by about 80 people and we raised just under £600! Thank you so much to all the people who worked so hard to make it a great success and congratulations if your pig won its race!



On Friday 24th March we held a Federation Malvern Day. We spent the day looking at our garden plan and participating in a selection of activities related to our Grimm's fairy tale garden.

We painted name stones to lay in the path of the Rumpelstiltskin garden; we painted wooden sweets for the gingerbread house in Hansel and Gretel's garden; we planted beans for the Beanstalk in Jack and the Beanstalk; we made mosaics of our footprints to match the Giant footprint for the garden; we made dragonflies to hover around the pond in the frog prince garden; we made bird feeders to hang in the garden; we created a wolf's head for Red Riding Hood's garden and designed a patchwork quilt for the wolf's bed; we sketched portraits of Red Riding Hood and Granny for her bedroom shelves; we chose images and words from each story to go onto the large book pages separating our gardens; and we researched wormeries as the base of Rapunzel's tower will contain a working wormery!

As you can imagine by the end of the day we were exhausted but, hopefully, now we all know a lot more about our school's entry to the Malvern Garden Show- "How Grimm is our garden?"

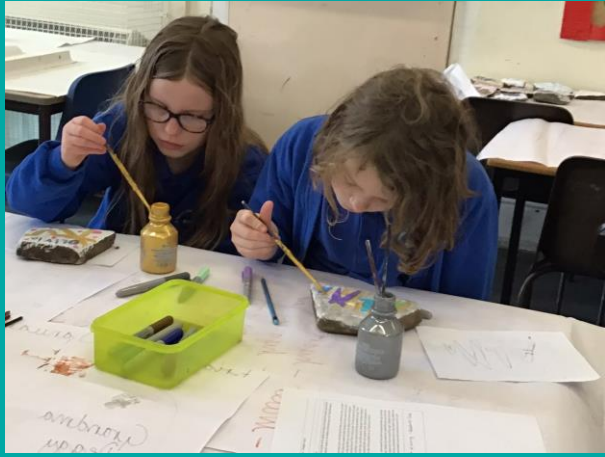
A huge thank you to all of the teachers, TAs, parents, grandparents and helpers who came into school to make the day a possibility.

We have another workshop / planting day during the Easter Holidays:

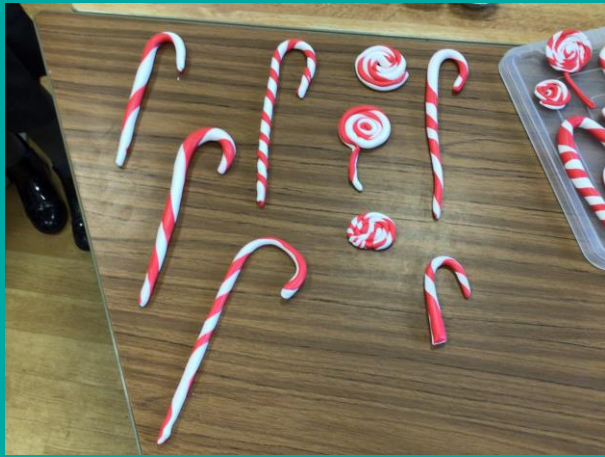
Tuesday 4th April at St Briavels school from 10-2pm

Bring your lunch and help out with the last few jobs before the actual Malvern event (parents please stay with your children for this - it is not a drop-off event). Anybody who would like to come along and help would be more than welcome.











Well Done and Thank You!

A big WELL DONE to Alexia Naylor, one of our governors, who was successful in raising £1,650 in the form of a community grant towards the “Children’s RHS Malvern Garden ” project. And many many thanks to St Briavels Parish Council who awarded it. THANK YOU!

New Busy Bees Toddler Group

Busy Bees Toddler Group

If you have a child under school age and are free on a Wednesday morning why don't you come along to Busy Bees. We meet in the village Chapel (just down the road from the school) at 9.00 until 11.00am. We have a large selection of toys, craft table, role play etc. Refreshments are available for the children and the adults (usually homemade cake) and plenty of tea and coffee. We do not have any set charge, but if you would like to contribute we suggest £1.50 per family

We would love to welcome you and your child/baby to our group!

Dates for your diaries

Please check letters home for more details about events. Dates may change.

- Friday March 31st - Easter Trail
- Friday March 31st - last day of term
- Tuesday 4th April - Malvern Planting Day (at St Briavels) 10am-2pm, everyone welcome, bring lunch!

- Monday April 17th - first day of term
- Monday May 1st - bank holiday
- Tuesday May 2nd - class photos
- Friday May 5th - Decorate a Crown competition for the Coronation of King Charles
- Monday May 8th - bank holiday (coronation)
- KS2 SATS week Tuesday May 9th - Friday May 12th
- Thursday May 11th - Sunday May 14th Malvern Show
- KS1 SATS week Monday May 15th - Friday May 19th
- Friday May 26th - last day of term
- Monday June 5th - INSET
- Tuesday June 6th - first day of term
- Thursday June 15th to Friday June 16th - year 3 / 4 YHA residential
- Thursday 15th June Yr6 Leavers Service Gloucester Cathedral
- Friday June 16th - Cystic Fibrosis Day - wear yellow!
- Friday July 7th St Briavels sports day
- Friday July 14th Year 6 Safari Park trip
- Friday July 21st - last day of term
- Monday Sept 4th INSET
- Tuesday Sept 5th INSET
- Wednesday Sept 6th - first day of term

We update key dates on our website (www.wyeforestfederation.co.uk), please check there and in your emails for notifications.

Term Dates 2022-2023

There is a downloadable version of this on our website at:

https://www.wyeforestfederation.co.uk/web/term_dates/372930

We also have the term dates now for 2023-2024 on the same page. If they don't appear immediately please give it a little time to download.

| SEPTEMBER | | | | | | OCTOBER | | | | | | NOVEMBER | | | | | | |
|-----------|---|----|----|----|-----|---------|---|----|----|----|-----|----------|------|----|----|----|----|----|
| Mon | | 5 | 12 | 19 | 26 | Mon | | 3 | 10 | 17 | 24 | 31 | Mon | | 7 | 14 | 21 | 28 |
| Tues | | 6 | 13 | 20 | 27 | Tues | | 4 | 11 | 18 | 25 | Tues | 1 | 8 | 15 | 22 | 29 | |
| Wed | | 7 | 14 | 21 | 28 | Wed | | 5 | 12 | 19 | 26 | Wed | 2 | 9 | 16 | 23 | 30 | |
| Thur | 1 | 8 | 15 | 22 | 29 | Thur | | 6 | 13 | 20 | 27 | Thur | 3 | 10 | 17 | 24 | | |
| Fri | 2 | 9 | 16 | 23 | 30 | Fri | | 7 | 14 | 21 | 28 | Fri | 4 | 11 | 18 | 25 | | |
| Sat | 3 | 10 | 17 | 24 | Sat | 1 | 8 | 15 | 22 | 29 | Sat | 5 | 12 | 19 | 26 | | | |
| Sun | 4 | 11 | 18 | 25 | Sun | 2 | 9 | 16 | 23 | 30 | Sun | 6 | 13 | 20 | 27 | | | |
| DECEMBER | | | | | | JANUARY | | | | | | FEBRUARY | | | | | | |
| Mon | | 5 | 12 | 19 | 26 | Mon | | 2 | 9 | 16 | 23 | 30 | Mon | | 6 | 13 | 20 | 27 |
| Tues | | 6 | 13 | 20 | 27 | Tues | | 3 | 10 | 17 | 24 | 31 | Tues | | 7 | 14 | 21 | 28 |
| Wed | | 7 | 14 | 21 | 28 | Wed | | 4 | 11 | 18 | 25 | Wed | 1 | 8 | 15 | 22 | | |
| Thur | 1 | 8 | 15 | 22 | 29 | Thur | | 5 | 12 | 19 | 26 | Thur | 2 | 9 | 16 | 23 | | |
| Fri | 2 | 9 | 16 | 23 | 30 | Fri | | 6 | 13 | 20 | 27 | Fri | 3 | 10 | 17 | 24 | | |
| Sat | 3 | 10 | 17 | 24 | 31 | Sat | | 7 | 14 | 21 | 28 | Sat | 4 | 11 | 18 | 25 | | |
| Sun | 4 | 11 | 18 | 25 | Sun | 1 | 8 | 15 | 22 | 29 | Sun | 5 | 12 | 19 | 26 | | | |
| MARCH | | | | | | APRIL | | | | | | MAY | | | | | | |
| Mon | | 6 | 13 | 20 | 27 | Mon | | 3 | 10 | 17 | 24 | Mon | 1 | 8 | 15 | 22 | 29 | |
| Tues | | 7 | 14 | 21 | 28 | Tues | | 4 | 11 | 18 | 25 | Tues | 2 | 9 | 16 | 23 | 30 | |
| Wed | 1 | 8 | 15 | 22 | 29 | Wed | | 5 | 12 | 19 | 26 | Wed | 3 | 10 | 17 | 24 | 31 | |
| Thur | 2 | 9 | 16 | 23 | 30 | Thur | | 6 | 13 | 20 | 27 | Thur | 4 | 11 | 18 | 25 | | |
| Fri | 3 | 10 | 17 | 24 | 31 | Fri | | 7 | 14 | 21 | 28 | Fri | 5 | 12 | 19 | 26 | | |
| Sat | 4 | 11 | 18 | 25 | Sat | 1 | 8 | 15 | 22 | 29 | Sat | 6 | 13 | 20 | 27 | | | |
| Sun | 5 | 12 | 19 | 26 | Sun | 2 | 9 | 16 | 23 | 30 | Sun | 7 | 14 | 21 | 28 | | | |
| JUNE | | | | | | JULY | | | | | | AUGUST | | | | | | |
| Mon | | 5 | 12 | 19 | 26 | Mon | | 3 | 10 | 17 | 24 | 31 | Mon | | 7 | 14 | 21 | 28 |
| Tues | | 6 | 13 | 20 | 27 | Tues | | 4 | 11 | 18 | 25 | Tues | 1 | 8 | 15 | 22 | 29 | |
| Wed | | 7 | 14 | 21 | 28 | Wed | | 5 | 12 | 19 | 26 | Wed | 2 | 9 | 16 | 23 | 30 | |
| Thur | 1 | 8 | 15 | 22 | 29 | Thur | | 6 | 13 | 20 | 27 | Thur | 3 | 10 | 17 | 24 | 31 | |
| Fri | 2 | 9 | 16 | 23 | 30 | Fri | | 7 | 14 | 21 | 28 | Fri | 4 | 11 | 18 | 25 | | |
| Sat | 3 | 10 | 17 | 24 | Sat | 1 | 8 | 15 | 22 | 29 | Sat | 5 | 12 | 19 | 26 | | | |
| Sun | 4 | 11 | 18 | 25 | Sun | 2 | 9 | 16 | 23 | 30 | Sun | 6 | 13 | 20 | 27 | | | |

| | | | |
|--------------|--|------------|--|
| Term Time | | Holidays | |
| Bank Holiday | | INSET days | |