



Subject Overview at WFF RE

Subject vision - Intent

Our curriculum has been carefully designed to enable every child to flourish now and in the future, preparing them to live life in the modern world.

The intent of Religious Education in the Wye Forest Federation is to

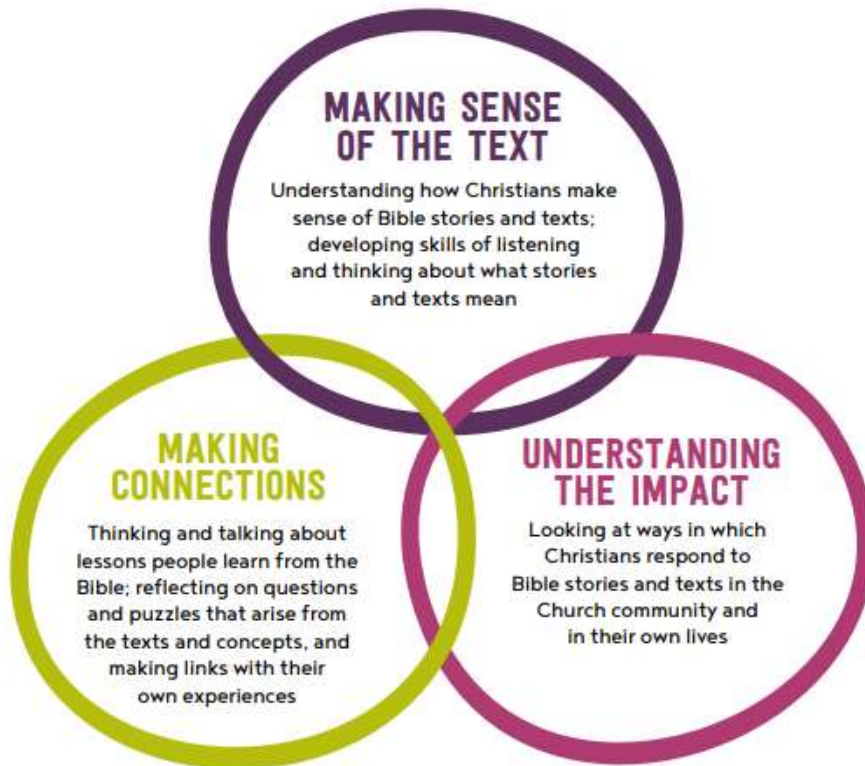
- Develop an awareness of spiritual and moral issues in life experiences;
- Develop knowledge and understanding of Christianity and other major world religions and value systems found in Britain;
- Develop an understanding of what it means to be committed to a religious tradition;
- Be able to reflect on their own experiences and to develop a personal response to the fundamental questions of life:
- Develop an understanding of religious traditions and to appreciate the cultural differences in Britain today;
- Develop investigate and research skills and to enable them to make reasoned judgments about religious issues:
- Have respect for other peoples' views and to celebrate the diversity in society.

Subject vision - Implementation

Teaching & Learning

The 2017–2022 syllabus is designed to support schools in developing and delivering excellence in RE. It responds to national calls for deepening pupils' knowledge about religions and for developing their 'religious literacy'. It does this by studying one religion at a time ('systematic' units), and then including 'thematic' units, which build on learning by comparing the religions, beliefs and practices studied.

The teaching and learning approach has three core elements which set the context for exploration of religion and belief:



The agreed syllabus requires that all pupils develop understanding of Christianity in each key stage. In addition, across the age range, pupils will develop understanding of the principal religions represented in the UK, in line with the law. These are Islam, Hinduism, Sikhism, Buddhism and Judaism. Furthermore, children from families where non-religious worldviews are held are represented in almost all year groups. These worldviews, including for example Humanism, will also be the focus for study in thematic units.

Organisation & Time Allocation

In accordance with the structure of Gloucestershire Agreed Syllabus we have agreed that:

In the Foundation Stage pupils will be introduced to a range of faith traditions and will be taught RE for 36 hours over the year.

At Key Stage 1 pupils study Christianity, Judaism and Islam. RE will be taught for at least for 36 hours over the year. This will generally be taught in discrete weekly sessions but periodically RE days will be used when appropriate.

At Key Stage 2 pupils study Christianity, Judaism, Hinduism and also consider non-religious worldviews. RE will be taught for at least for 45 hours over the year. This will generally be taught in discrete weekly sessions but periodically RE days will be used when appropriate.

We keep resources for religious education in a central store. There is a set of bibles for KS 2 and a collection of religious artefacts, which we use to enrich teaching in religious education.

Assessment/Recording & Reporting

The Gloucestershire Agreed Syllabus for Religious Education 2017-2022 sets out a structure for recognising pupil achievements and each pupil can work progressively towards achieving the expected end of key stage learning outcomes as outlined in the syllabus.

We assess children's work in religious education by making informal judgements as we observe them during lessons. On completion of a unit of work, we record our assessments for each pupil on insight and at the end of each year we assess the children's' progress against year group objectives.

The subject leader regularly monitors the standard of work in RE books and facilitates Federation monitoring at staff meetings.

School reports are sent home in the summer term of each year and the RE report is written with reference to assessment records as well as pupils' individual work.

Parents are sent termly information on the Re units that are being taught on the class bubble plans

Wider Curriculum

We encourage our pupils to develop their sense of self-worth by playing a positive role in contributing to school life and the wider community. We challenge all of our pupils to look for opportunities to show the school values of Courage, Compassion, Resilience and Respect.

Subject vision - Impact

Impact

Religious Education at the Wye Forest Federation develops pupils'...

- knowledge and understanding of, and their ability to respond to, Christianity, other principal world religions, other religious traditions and world views;
- understanding and respect for different religions, beliefs, values and traditions (including ethical life stances), through exploring issues within and between faiths;
- understanding of the influence of faith and belief on individuals, societies, communities and cultures;
- skills of enquiry and response through the use of religious vocabulary, questioning and empathy;
- skills of reflection, expression, application, analysis and evaluation of beliefs, values and practices, and the communication of personal responses to these.

Religious Education at the Wye Forest Federation encourages pupils to...

- consider challenging questions of the meaning and purpose of life; beliefs about God, the self and the nature of reality, issues of right and wrong and what it means to be human;
- understand the influence of religion on individuals, families, communities and cultures;
- learn from different religions, beliefs, values and traditions while exploring questions of meaning and their own beliefs;
- learn about religious and ethical teaching, enabling them to make reasoned and informed responses to religious, moral and social issues;
- develop their sense of identity and belonging, preparing them for life as citizens in a plural, global society;
- develop respect for and sensitivity to others, in particular those whose faiths and beliefs are different from their own.

Religious Education at the Wye Forest Federation enhances pupils'...

- awareness and understanding of religions and beliefs, teachings, practices and forms of expression;
- ability to reflect on, consider, analyse, interpret and evaluate issues of truth, belief, faith and ethics and to communicate their responses.

Religious Education at the Wye Forest Federation offers...

- opportunities for personal reflection and spiritual development.