

Wye Forest Federation

Redbrook Church of England Primary School
St Briavels Parochial Church of England Primary School



Child Protection and Safeguarding Policy Including allegations against staff and low level concerns.

This policy was agreed by the Full Governing Body on: (and supersedes all previous policies relating to this area)	14.5.2026
Implemented:	September 2024
Revised:	September 2025
Revised	May 2026
Review date:	1.9.2026

Contents

Statement of Intent

Important contacts

1. Aims
2. Legislation and statutory guidance
3. Definitions
4. Equality Statement
5. Roles and responsibilities
6. Confidentiality
7. Recognising abuse and taking action
8. Online safety and the use of mobile technology
9. Notifying parents or carers
10. Pupils with special educational needs, disabilities or health issues
11. Pupils with a social worker
12. Looked and previously looked after children
13. Complaints and concerns about school safeguarding
14. Record keeping
15. Training
16. Monitoring arrangements
17. Links with other policies

Appendix 1: Types of abuse and specific safeguarding issues

Appendix 2: Allegations of abuse against staff and low-level concerns policy

Statement of Intent

The Wye Forest Federation is committed to safeguarding and promoting the physical, mental and emotional welfare of every pupil, both inside and outside of our schools' premises. We implement a whole school preventative approach to managing safeguarding concerns, ensuring the wellbeing of pupils is at the heart of all action we take.

Our Ethos

The Wye Forest Federation recognises the importance of providing an environment and ethos that deters and prevents abuse and challenges inappropriate behaviour, ensuring children are safe, secure and respected; encouraging them to talk openly; whilst enabling them to feel confident that they will be listened to.

This policy sets out a clear framework for delivering this promise, in line with safeguarding legislation and statutory guidance.

Important contacts

Across our Federation, we have one DSL and 3 separate DDSLs.

Details of our DSL and DDSLs are available on safeguarding displays around each school, on our website and on in our main reception areas.

ROLE/ORGANISATION	NAME	CONTACT DETAILS
Designated safeguarding lead (DSL)	Natalie Frey	head@wff.gloucs.sch.uk
Deputy DSL	Amy Wilson Lorna Hill Julia Price	inclusion@wff.gloucs.sch.uk Lhill@st-briavels.gloucs.sch.uk finance@wff.gloucs.sch.uk
Designated teacher for looked after and previously looked after children	Amy Wilson	inclusion@wff.gloucs.sch.uk
Local authority designated officer (LADO)	Nigel Hatton & team	amadmin@gloucestershire.gov.uk 01452 426994
Chair of governors	Mike Haines	mhaines@wff.gloucs.sch.uk
Safeguarding governor	Georgie Benford	gbenford@wff.gloucs.sch.uk
Channel helpline		020 7340 7264

1. Aims

The school aims to ensure that:

- › All staff understand their statutory safeguarding responsibilities with respect to safeguarding, are alert to signs of abuse and specific safeguarding issues and know how to refer their concerns to the DSL
- › Children are taught how to keep safe and recognise behaviour that is unacceptable
- › A culture of safer recruitment is created by adopting procedures that help deter, reject or identify people who might pose a risk to children
- › Staff and volunteers are only appointed when all of the appropriate checks have been completed satisfactorily

2. Legislation and statutory guidance

This policy is based on the Department for Education's (DfE's) statutory guidance [Keeping Children Safe in Education \(2025\)](#) and [Working Together to Safeguard Children \(2023\)](#), and the [Governance Handbook](#). We comply with this guidance and the arrangements agreed and published by our 3 local safeguarding partners (see section 3).

This policy is also based on the following legislation:

- › Section 175 of the [Education Act 2002](#), which places a duty on schools and local authorities to safeguard and promote the welfare of pupils
- › [The School Staffing \(England\) Regulations 2009](#), which set out what must be recorded on the single central record and the requirement for at least 1 person conducting an interview to be trained in safer recruitment techniques
- › [The Children Act 1989](#) (and [2004 amendment](#)), which provides a framework for the care and protection of children
- › Section 5B(11) of the Female Genital Mutilation Act 2003, as inserted by section 74 of the [Serious Crime Act 2015](#), which places a statutory duty on teachers to report to the police where they discover that female genital mutilation (FGM) appears to have been carried out on a girl under 18
- › [Statutory guidance on FGM](#), which sets out responsibilities with regards to safeguarding and supporting girls affected by FGM
- › [The Rehabilitation of Offenders Act 1974](#), which outlines when people with criminal convictions can work with children
- › Schedule 4 of the [Safeguarding Vulnerable Groups Act 2006](#), which defines what 'regulated activity' is in relation to children
- › [Statutory guidance on the Prevent duty](#), which explains schools' duties under the Counter-Terrorism and Security Act 2015 with respect to protecting people from the risk of radicalisation and extremism
- › [The Human Rights Act 1998](#), which explains that being subjected to harassment, violence and/or abuse, including that of a sexual nature, may breach any or all of the rights which apply to individuals under the [European Convention on Human Rights](#) (ECHR)
- › [The Equality Act 2010](#), which makes it unlawful to discriminate against people regarding particular protected characteristics (including disability, sex, sexual orientation, gender reassignment and race). This means our governors and headteacher should carefully consider how they are supporting their pupils with regard to these characteristics. The Act allows our school to take positive action to deal with particular disadvantages affecting pupils (where we can show it's proportionate). This includes making reasonable adjustments for disabled pupils. For example, it could include taking positive action to support girls where there's evidence that they're being disproportionately subjected to sexual violence or harassment
- › [The Public Sector Equality Duty \(PSED\)](#), which explains that we must have due regard to eliminating unlawful discrimination, harassment and victimisation. The PSED helps us to focus on key issues of

concern and how to improve pupil outcomes. Some pupils may be more at risk of harm from issues such as sexual violence; homophobic, biphobic or transphobic bullying; or racial discrimination

- › The [Childcare \(Disqualification\) and Childcare \(Early Years Provision Free of Charge\) \(Extended Entitlement\) \(Amendment\) Regulations 2018](#) (referred to in this policy as the “2018 Childcare Disqualification Regulations”) and [Childcare Act 2006](#), which set out who is disqualified from working with children
- › This policy also meets requirements relating to safeguarding and welfare in the [statutory framework for the Early Years Foundation Stage](#)

3. Definitions

Safeguarding and promoting the welfare of children means:

- › Providing help and support to meet the needs of children as soon as problems emerge
- › Protecting children from maltreatment, whether that is within or outside the home, including online
- › Preventing impairment of children’s mental and physical health or development
- › Ensuring that children grow up in circumstances consistent with the provision of safe and effective care
- › Taking action to enable all children to have the best outcomes

Child protection is part of this definition and refers to activities undertaken to prevent children suffering, or being likely to suffer, significant harm.

Abuse is a form of maltreatment of a child, and may involve inflicting harm or failing to act to prevent harm. Harm can include ill treatment that is not physical as well as the impact of witnessing ill treatment of others. Appendix 1 explains the different types of abuse.

Neglect is a form of abuse and is the persistent failure to meet a child’s basic physical and/or psychological needs, likely to result in the serious impairment of the child’s health or development. Appendix 1 defines neglect in more detail.

Exploitation is where an individual or group takes advantage of an imbalance of power to coerce, manipulate or deceive a child into taking part in a criminal or sexual activity.

Sharing of nudes and semi-nudes (also known as sexting or youth-produced sexual imagery) is where children share nude or semi-nude images, videos or live streams.

Children includes everyone under the age of 18.

The following 3 **safeguarding partners** are identified in Keeping Children Safe in Education (and defined in the Children Act 2004, as amended by chapter 2 of the Children and Social Work Act 2017). They will make arrangements to work together to safeguard and promote the welfare of local children, including identifying and responding to their needs:

- › The local authority (LA)
- › Integrated care boards (previously known as clinical commissioning groups) for an area within the LA
- › The chief officer of police for a police area in the LA area

Victim is a widely understood and recognised term, but we understand that not everyone who has been subjected to abuse considers themselves a victim, or would want to be described that way. When managing an incident, we will be prepared to use any term that the child involved feels most comfortable with.

Alleged perpetrator(s) and **perpetrator(s)** are widely used and recognised terms. However, we will think carefully about what terminology we use (especially in front of children) as, in some cases, abusive behaviour can be harmful to the perpetrator too. We will decide what’s appropriate and which terms to use on a case-by-case basis.

4. Equality statement

Some children have an increased risk of abuse, both online and offline, and additional barriers can exist for some children with respect to recognising or disclosing it. We are committed to anti-discriminatory practice and recognise children's diverse circumstances. We ensure that all children have the same protection, regardless of any barriers they may face.

We give special consideration to children who:

- Are disabled or have certain health conditions and have specific additional needs; have special educational needs (whether or not they have a statutory Education, Health and Care Plan)
- have a mental health need;
- are a young carer;
- are showing signs of being drawn into anti-social or criminal behaviour, including gang involvement and association with organised crime groups or county lines;
- are frequently missing/going missing from care or from home;
- are at risk of modern slavery, trafficking, sexual or criminal exploitation;
- are at risk of being radicalised or exploited;
- have a family member in prison, or is affected by parental offending;
- are in a family circumstance presenting challenges for the child, such as drug and alcohol misuse, adult mental health issues and domestic abuse;
- are misusing drugs or alcohol themselves;
- have returned home to their family from care;
- are at risk of 'honour'-based abuse such as Female Genital Mutilation or Forced Marriage;
- are privately fostered child; and
- are persistently absent from education, including persistent absences for part of the school day.

5. Roles and responsibilities

Safeguarding and child protection is **everyone's** responsibility. This policy applies to all staff, volunteers and governors in the school and is consistent with the procedures of the 3 safeguarding partners. Our policy and procedures also apply to extended school and off-site activities.

The school plays a crucial role in preventative education. This is in the context of a whole-school approach to preparing pupils for life in modern Britain, and a culture of zero tolerance of sexism, misogyny/misandry, homophobia, biphobia, transphobia and sexual violence/harassment. This will be underpinned by our:

- › Behaviour policy
- › Pastoral support system
- › Planned programme of relationships, sex and health education (RSHE), following the statutory guidance, which is inclusive and delivered regularly, tackling issues such as:
 - Healthy and respectful relationships
 - Boundaries and consent
 - Stereotyping, prejudice and equality
 - Body confidence and self-esteem

- How to recognise an abusive relationship (including coercive and controlling behaviour)
- The concepts of, and laws relating to, sexual consent, sexual exploitation, abuse, grooming, coercion, harassment, rape, domestic abuse, so-called honour-based violence such as forced marriage and FGM and how to access support
- What constitutes sexual harassment and sexual violence and why they're always unacceptable

5.1 All staff

All staff will:

- › Read and understand part 1, part 5 and annex B of the Department for Education's statutory safeguarding guidance, [Keeping Children Safe in Education](#), and review this guidance at least annually
- › Sign a declaration at the beginning of each academic year to say that they have reviewed the guidance and understand it.
- › Reinforce the importance of online safety when communicating with parents and carers. This includes making parents and carers aware of what we ask children to do online (e.g. sites they need to visit or who they'll be interacting with online)
- › Create a culture where pupils who are LGBTQ+ are able to speak out and share their concerns

All staff will be aware of:

- › Our systems which support safeguarding, including this child protection and safeguarding policy, the staff code of conduct, the role and identity of the designated safeguarding lead (DSL) and deputies, the behaviour policy, anti-bullying and hate policy, online safety policy, acceptable use policy, mobile device policy and the safeguarding response to children who go missing from education
- › The early help assessment process (sometimes known as the common assessment framework) and their role in it, including identifying emerging problems, liaising with the DSL, and sharing information with other professionals to support early identification and assessment
- › The process for making referrals to local authority children's social care and for statutory assessments that may follow a referral, including the role they might be expected to play
- › What to do if they identify a safeguarding issue or a child tells them they are being abused or neglected, including specific issues such as FGM, and how to maintain an appropriate level of confidentiality while liaising with relevant professionals
- › The signs of different types of abuse and neglect, as well as specific safeguarding issues, such as child-on-child abuse, child sexual exploitation (CSE), child criminal exploitation (CCE), indicators of being at risk from or involved with serious violent crime, FGM, radicalisation and serious violence (including that linked to county lines)
- › The importance of reassuring victims that they are being taken seriously and that they will be supported and kept safe
- › The fact that children can be at risk of harm inside and outside of their home, at school and online
- › The fact that children who are (or who are perceived to be) lesbian, gay, bi or gender questioning (LGBTQ+) can be targeted by other children
- › What to look for to identify children who need help or protection

Section 15 of this policy outline in more detail how staff are supported to do this.

5.2 The designated safeguarding lead (DSL)

The DSL is a member of the senior leadership team. Our DSL is Natalie Frey – Executive Headteacher. The DSL takes lead responsibility for child protection and wider safeguarding in the school. This includes online safety, and understanding our filtering and monitoring processes on school devices and school networks to keep pupils safe online.

During term time, the DSL will be available during school hours for staff to discuss any safeguarding concerns. In the event of all safeguarding leads being off site, then contact details for Natalie Frey are available on staff notice boards.

For out of hours/ out of term time activities, Natalie Frey can be contacted via her mobile phone (number shared privately with staff) or if not an emergency, via head@wff.gloucs.sch.uk

The DSL for child protection in this federation is: **Natalie Frey**

The deputy DSLs for child protection in this federation are: **Amy Wilson, Felicity Kear and Julia Price**

The designated teacher for looked after children and previously looked after children is: **Amy Wilson**

The DSL will be given the time, funding, training, resources and support to:

- › Provide advice and support to other staff on child welfare and child protection matters
- › Take part in strategy discussions and inter-agency meetings and/or support other staff to do so
- › Contribute to the assessment of children
- › Refer suspected cases, as appropriate, to the relevant body (local authority children's social care, Channel programme, Disclosure and Barring Service, and/or police), and support staff who make such referrals directly
- › Have a good understanding of harmful sexual behaviour
- › Have a good understanding of the filtering and monitoring systems and processes in place at our school

The DSL will also:

- › Liaise with local authority case managers and designated officers for child protection concerns as appropriate
- › Discuss the local response to sexual violence and sexual harassment with police and local authority children's social care colleagues to prepare the school's policies
- › Be confident that they know what local specialist support is available to support all children involved (including victims and alleged perpetrators) in sexual violence and sexual harassment, and be confident as to how to access this support
- › Be aware that children must have an 'appropriate adult' to support and help them in the case of a police investigation or search

The full responsibilities of the DSL and deputies are set out in their job description.

5.3 The governing board

The governing board will:

- › Facilitate a whole-school approach to safeguarding, ensuring that safeguarding and child protection are at the forefront of, and underpin, all relevant aspects of process and policy development
- › Ensure that children are taught about how to keep themselves and others safe, including online following statutory guidance .
- › Evaluate and approve this policy at each review, ensuring it complies with the law, and hold the headteacher to account for its implementation
- › Be aware of its obligations under the Human Rights Act 1998, the Equality Act 2010 (including the Public Sector Equality Duty), and our school's local multi-agency safeguarding arrangements
- › Appoint a link governor to monitor the effectiveness of this policy in conjunction with the full governing board. This is always a different person from the DSL
- › Ensure all staff undergo safeguarding and child protection training, including online safety, and that such training is regularly updated and is in line with advice from the safeguarding partners
- › **Have overall strategic responsibility for filtering and monitoring and seek assurance that the filtering and monitoring standards for schools are being met.** This includes:

- Making sure that the leadership team and staff are aware of the provisions in place, and that they understand their expectations, roles and responsibilities around filtering and monitoring as part of safeguarding training
- Reviewing the [DfE's filtering and monitoring standards](#), and discussing with IT staff and service providers what needs to be done to support the school in meeting these standards
- › Make sure:
 - The DSL has the appropriate status and authority to carry out their job, including additional time, funding, training, resources and support
 - Online safety is a running and interrelated theme within the whole-school approach to safeguarding and related policies
 - The DSL has lead authority for safeguarding, including online safety and understanding the filtering and monitoring systems and processes in place
 - The school has procedures to manage any safeguarding concerns (no matter how small) or allegations that do not meet the harm threshold (low-level concerns) about staff members (including supply staff, volunteers and contractors). Appendix 3 of this policy covers this procedure
 - That this policy reflects that children with SEND, or certain medical or physical health conditions, can face additional barriers to any abuse or neglect being recognised
- › Where another body is providing services or activities within the school building (regardless of whether or not the children who attend these services/activities are children on the school roll):
 - Ensure that appropriate arrangements are in place to keep children safe where school facilities or premises are hired or rented out to organisations or individuals and, where services or activities are provided separately by another body, seek assurance that the body has appropriate safeguarding and child protection policies and procedures in place and that individuals working with children have appropriate DBS checks.
 - Ensure that safeguarding requirements are included in any transfer of control agreement, i.e. lease or hire agreement, as a condition of use and occupation of the premises, and that failure to comply with this would lead to termination of the agreement.
- Establish robust health and safety and emergency evacuation procedures.

The chair of governors will act as the 'case manager' in the event that an allegation of abuse is made against the headteacher, where appropriate (see appendix 2).

All governors will read Keeping Children Safe in Education in its entirety.

All governors will undertake level 1 child protection training

Section 15 of this policy has information on how governors are supported to fulfil their role.

5.4 The headteacher

Has a duty to:

- › • Ensure that the policies and procedures adopted by the governing board, particularly concerning referrals of cases of suspected abuse and neglect, are followed by staff.
- › • Ensure that staff implement appropriate filters and monitoring of online material.
- › • Provide staff with the appropriate policies and information upon induction.
- › • Ensure that the school practises safe recruitment in checking the suitability of staff and volunteers to work with children in accordance with the guidance in Keeping Children Safe in Education and the Education (Independent School Standards) (England) Regulations 2014 as amended.
- › • Ensure that the school carries out all necessary checks on the suitability of people who serve as members and/or on the governing board.

- Ensure that, where the school ceases to use the services of any person because that person was considered unsuitable to work with children, a prompt and detailed report is made to the DBS within one month.

5.5 Virtual school heads

Virtual school heads have a non-statutory responsibility for the strategic oversight of the educational attendance, attainment and progress of pupils with a social worker and **to promote the educational achievement of all children in kinship care.**

They should also identify and engage with key professionals, e.g. DSLs, special educational needs co-ordinators (SENCOs), social workers, mental health leads and others.

6. Confidentiality

Safeguarding children raises issues of confidentiality that must be clearly understood by all staff/volunteers in the federation.

- › All staff in the federation, both teaching and non-teaching staff, have a responsibility to share relevant information about the protection of children with other professionals, particularly the investigative agencies.
- › Staff/volunteers who receive information about children and their families in the course of their work should share that information only within appropriate professional contexts.

All should note:

- › Timely information sharing is essential to effective safeguarding
- › Fears about sharing information must not be allowed to stand in the way of the need to promote the welfare, and protect the safety, of children
- › The Data Protection Act (DPA) 2018 and UK GDPR do not prevent, or limit, the sharing of information for the purposes of keeping children safe
- › If staff need to share 'special category personal data', the DPA 2018 contains 'safeguarding of children and individuals at risk' as a processing condition that allows practitioners to share information without consent if: it is not possible to gain consent; it cannot be reasonably expected that a practitioner gains consent; or if to gain consent would place a child at risk
- › Staff should never promise a child that they will not tell anyone about a report of abuse, as this may not be in the child's best interests
- › If a victim asks the school not to tell anyone about the sexual violence or sexual harassment:
 - There's no definitive answer, because even if a victim doesn't consent to sharing information, staff may still lawfully share it if there's another legal basis under the UK GDPR that applies
 - The DSL will have to balance the victim's wishes against their duty to protect the victim and other children
 - The DSL should consider that:
 - Parents or carers should normally be informed (unless this would put the victim at greater risk)
 - The basic safeguarding principle is: if a child is at risk of harm, is in immediate danger, or has been harmed, a referral should be made to the local authority children's social care
 - Rape, assault by penetration and sexual assault are crimes. Where a report of rape, assault by penetration or sexual assault is made, this should be referred to the police.

While the age of criminal responsibility is 10, if the alleged perpetrator is under 10, the starting principle of referring to the police remains

- › Regarding anonymity, all staff will:
 - Be aware of anonymity, witness support and the criminal process in general where an allegation of sexual violence or sexual harassment is progressing through the criminal justice system
 - Do all they reasonably can to protect the anonymity of any children involved in any report of sexual violence or sexual harassment, for example, carefully considering which staff should know about the report, and any support for children involved
 - Consider the potential impact of social media in facilitating the spreading of rumours and exposing victims' identities
- › The government's [information sharing advice for safeguarding practitioners](#) includes 7 'golden rules' for sharing information, and will support staff who have to make decisions about sharing information
- › If staff are in any doubt about sharing information, they should speak to the DSL (or deputy)
- › Confidentiality is also addressed in this policy with respect to record-keeping in section 14, and allegations of abuse against staff in appendix 2

7. Recognising abuse and taking action

Staff, volunteers and governors must follow the procedures set out below in the event of a safeguarding concern.

Please note – in this and subsequent sections, you should take any references to the DSL to mean “the DSL (or deputy DSL)”.

7.1 If a child is suffering or likely to suffer harm, or is in immediate danger

If a member of staff or volunteer is concerned about a child, he or she must inform the DSL. The DSL will decide whether the concerns should be raised to Children's Services and if deemed to have met the threshold a MARF will be completed. If a MARF to Children's Services is made, the DSL will discuss the referral with the parents, unless to do so would place the child at further risk of harm.

While it is the DSL's role to make Child Protection Contact Referrals, **any staff member can make a Child Protection Contact Referral to Children's Services if a child is in immediate danger or is at risk of harm** (e.g. concern that a family might have plans to carry out FGM, Forced Marriage etc). In these circumstances a Child Protection Contact Referral should be made to Children's Services and/or the Police immediately. Where Child Protection Contact Referrals are made by another member of staff, the DSL should be informed as soon as possible.

If the allegations raised are against other children, the school will follow guidelines issued by GSCP. Please see the federation's anti-bullying policy for more details on procedures to minimise the risk of child on child abuse.

The member of staff must record information regarding the concerns **on CPOMS on the same day**. The recording must be a clear, precise and a factual account of any verbal disclosures and observations

Particular attention should be paid to the attendance and development of any child about whom the school has concerns, or who has been identified as being the subject of a Child Protection Plan and a written record will be kept.

If a pupil who is/or has been the subject of a child protection plan changes school, the DSL will inform the social worker responsible for the case and transfer the appropriate records to the DSL at the receiving school, in a secure manner, and separate from the child's academic file.

The DSL is responsible for making the senior leadership team aware of trends in behaviour that may affect pupil welfare. If necessary, training will be arranged.

7.2 If a child makes a disclosure to you

If a child discloses a safeguarding issue to you, you should:

- › Listen to and believe them. Allow them time to talk freely and do not ask leading questions
- › Stay calm and do not show that you are shocked or upset
- › Tell the child they have done the right thing in telling you. Do not tell them they should have told you sooner
- › Explain what will happen next and that you will have to pass this information on. Do not promise to keep it a secret
- › Write up your conversation as soon as possible in the child's own words on CPOMS. Stick to the facts, and do not put your own judgement on it
- › Assign the report to the DSL and alert Natalie Frey or Amy Wilson. Alternatively, if appropriate, make a referral to children's social care and/or the police directly (see 7.1), and tell the DSL as soon as possible that you have done so. **Aside from these people, do not disclose the information to anyone else unless told to do so by a relevant authority involved in the safeguarding process**

Bear in mind that some children may:

- › Not feel ready, or know how to tell someone that they are being abused, exploited or neglected
- › Not recognise their experiences as harmful
- › Feel embarrassed, humiliated or threatened. This could be due to their vulnerability, disability, sexual orientation and/or language barriers

None of this should stop you from having a 'professional curiosity' and speaking to the DSL if you have concerns about a child.

7.3 If you have concerns about a child (as opposed to believing a child is suffering or likely to suffer from harm, or is in immediate danger)

Figure 1 below, , illustrates the procedure to follow if you have any concerns about a child's welfare.

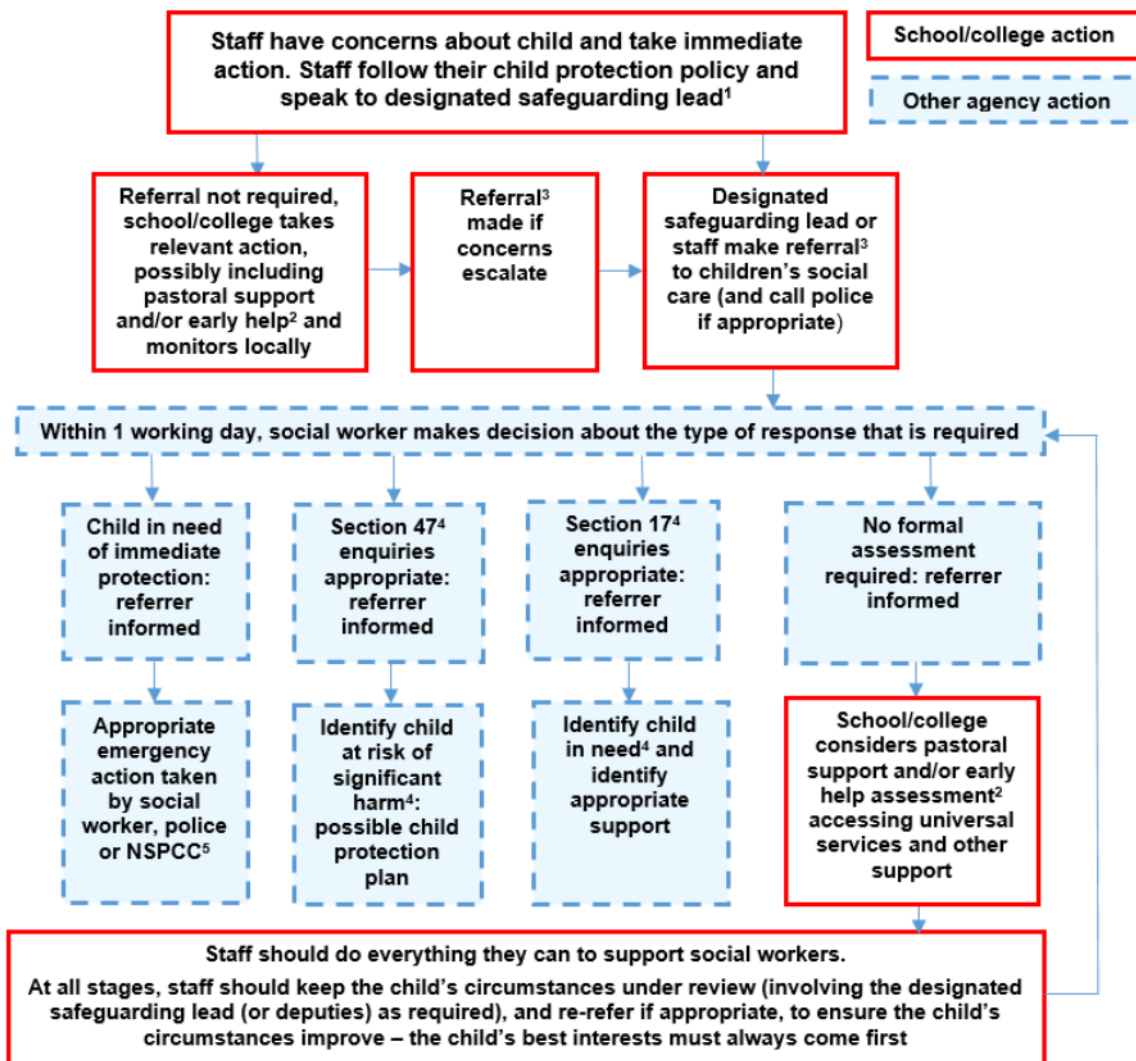
Where possible, speak to the DSL first to agree a course of action.

If in exceptional circumstances the DSL is not available, this should not delay appropriate action being taken. Speak to a member of the senior leadership team and/or take advice from local authority children's social care. You can also seek advice at any time from the NSPCC helpline on 0808 800 5000. Share details of any actions you take with the DSL as soon as practically possible.

Make a referral to local authority children's social care directly, if appropriate (see 'Referral' below). Share any action taken with the DSL as soon as possible.

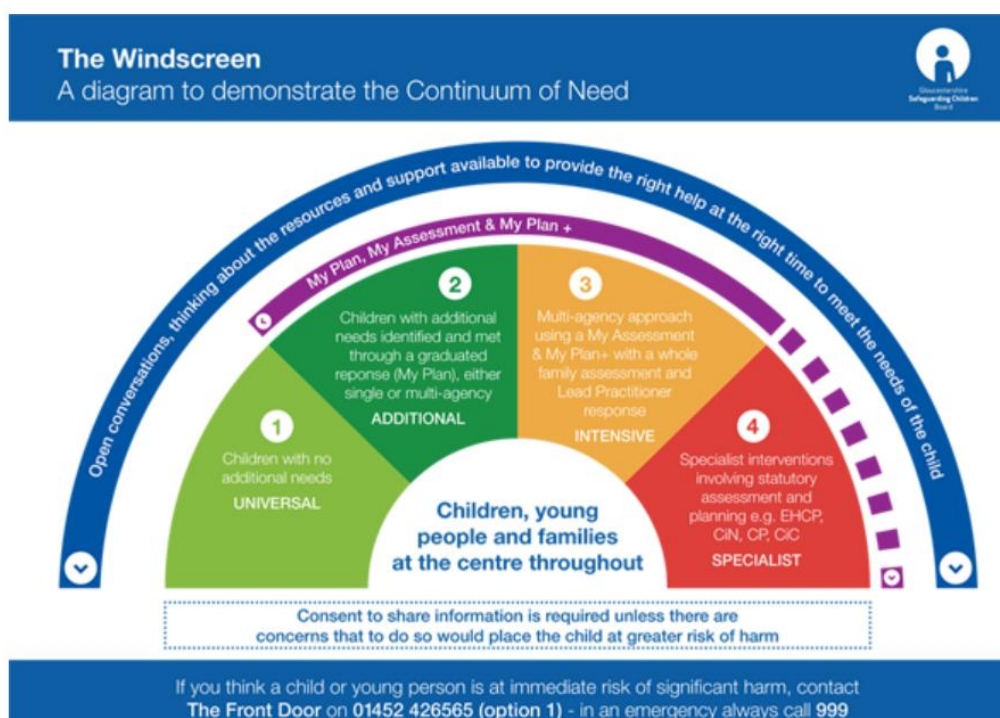
Figure 1: procedure if you have concerns about a child’s welfare (as opposed to believing a child is suffering or likely to suffer from harm, or in immediate danger)

(Note – if the DSL is unavailable, this should not delay action. See section 7.4 for what to do.)



Early help assessment

If an early help assessment is appropriate, the DSL will generally lead on liaising with other agencies and setting up an inter-agency assessment as appropriate. The safeguarding 'Continuum of need' – the Windscreen is an important diagram to keep in mind for all children. [Child in Need - Levels of Intervention \(LOI\) \(proceduresonline.com\)](https://www.proceduresonline.com/child-in-need/levels-of-intervention-loi/)



Staff may be required to support other agencies and professionals in an early help assessment, in some cases acting as the lead practitioner.

We will discuss and agree, with statutory safeguarding partners, levels for the different types of assessment, as part of local arrangements.

The DSL will keep the case under constant review and the school will consider a referral to local authority children's social care if the situation does not seem to be improving. Timelines of interventions will be monitored and reviewed.

Within Gloucestershire the Early Help Partnership is co-ordinated by Families First Plus but all organisations working with children and young people should view themselves as part of the Early Help Partnership. A directory of early help services is available at <https://www.gloucestershire.gov.uk/health-and-social-care/children-young-people-and-families/early-help-and-targeted-support/targeted-support/families-first/> which will help practitioners and families find information and support to prevent escalation of needs and crisis.

Our offer of Early Help

ALL staff recognise their role in ensuring safeguarding is always prioritised for **ALL** children. We believe that information sharing and timely effective support can ensure that **ALL** children and families get targeted support that is fundamental for success.

Families can benefit from support from a wide range of agencies. We recognise that other agencies will be able to support families based on their specialised work. Therefore, our role is often to signpost families to the

resources that will best support their needs the Wye Forest Federation understands their responsibilities and as schools, we will carry out our duties in ensuring the effectiveness of Early Help Services for pupils in accordance with the requirements of the Children Act 2004 and within the statutory guidance "Working Together 2023" and "KCSIE". In summary, these are to:

- Identify children and their families who would benefit from Early Help.
- Undertake an assessment of the need for Early Help, working closely with families.
- Ensure signposting of targeted Early Help services to address the needs of the child/ren and families.

We focus on support which significantly improves the outcomes for the child/ren. This involves the use of evidence-based interventions which are often led by our team in school. We regularly use the support of outside agencies such as Young Minds Matter (if you want to find out more about this support, please speak to Miss Wilson).

- Share information on that provision which is consistent with the child's welfare and with due regard to confidentiality.

Staff have daily contact with children and their families throughout term time. All staff recognise their role in identifying needs of vulnerable children and their families need for early help. All reports of concern are logged on the school's safeguarding software. A secure electronic record is maintained as a chronology of concerns.

Support for pupils includes:

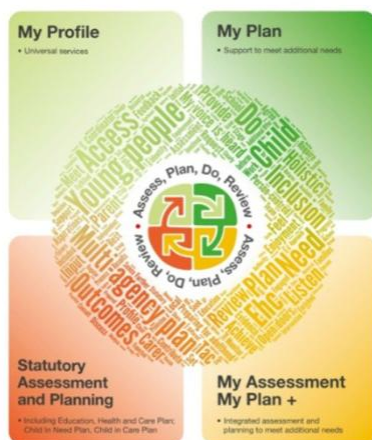
- Promoting good attendance and punctuality
- Promoting self-esteem and confidence
- Promoting positive behaviour and positive attitudes to learning
- Providing personal, social and emotional support to children

Support for families includes:

- Attendance and support at school and multiagency agency meetings
- Liaising with a range of external services
- Providing information on services available in the local area
- signposting where appropriate.
- Being a listening post when things get hard, we all struggle at times.

Graduated Pathway

Enabling the right level of intervention and support when needed



In Gloucestershire, we are committed to working together and in partnership with all agencies providing services to children, young people and their families. The Graduated Pathway of Early Help and Targeted Support is our Early Help assessment and planning process which provides an integrated and holistic framework to support all practitioners working with children, young people and families. This applies to the whole range of needs including:

- Educational.
- Social or emotional and/or disability.
- Wider family and environmental.

The Graduated Pathway supports a whole-family approach and is based on a simple Assess, Plan, Do, Review cycle and has graduated responses.

Referral

If it is appropriate to refer a case to local authority children's social care or the police, the DSL will make the referral or support you to do so.

If you make a referral directly (see section 7.1), you must tell the DSL as soon as possible.

The local authority will make a decision within 1 working day of a referral about what course of action to take and will let the person who made the referral know the outcome. The DSL or person who made the referral must follow up with the local authority if this information is not made available, and ensure outcomes are properly recorded.

If the child lives in Gloucestershire:

During office hours

You can call Children and Families Front Door Service on 01452 426565 (Monday to Friday 9am to 5pm).

Out of office hours

If the issue cannot safely wait until the next working day, please contact the Emergency Duty Team on 01452 614758 and provide us with as much information as possible.

Enquiries needing an immediate response should be called in to prevent any delay. This would include:

- When it is felt a child or young person is at immediate risk of harm
- When a child protection investigation is needed (because of physical, sexual and emotional abuse or chronic neglect)

Request for service

All other requests for service should be submitted on a Multi-Agency Request Form (MARF) via our on-line portal. <https://children.gloucestershire.gov.uk/web/portal/pages/home>. If this is not possible, please email a completed MARF to send an email to childrenshelpdesk@gloucestershire.gov.uk. Please use the link below to download the current form.

If the child's situation does not seem to be improving after the referral, the DSL or person who made the referral must follow local escalation procedures to ensure their concerns have been addressed and that the child's situation improves.

<https://www.gloucestershire.gov.uk/media/2103923/escalation-of-professional-concerns-guidance-january-2021.pdf>

If the child lives in Monmouthshire:

Children's Referral and Assessment Team: Telephone: 01291 635669

Children and Families Support Team: Telephone: 01291 635692

Emergency out of hours service: Telephone: 0800 328 4432 or see our emergency out of hours service pages.

7.4 Concerns about a staff member, supply teacher, volunteer or contractor

If you have concerns about a member of staff (including a supply teacher, volunteer or contractor), or an allegation is made about a member of staff (including a supply teacher, volunteer or contractor) posing a risk of harm to children, speak to the headteacher as soon as possible. If the concerns/allegations are about the headteacher, speak to the chair of governors.

The headteacher/chair of governors will then follow the procedures set out in appendix 2, if appropriate.

Where you believe there is a conflict of interest in reporting a concern or allegation about a member of staff (including a supply teacher, volunteer or contractor) to the headteacher, report it directly to the local authority designated officer (LADO).

If you receive an allegation relating to an incident where an individual or organisation was using the school premises for running an activity for children, follow our school safeguarding policies and procedures, informing the LADO, as you would with any safeguarding allegation.

Where appropriate, the school will inform Ofsted of the allegation and actions taken, within the necessary timescale (see appendix 2 for more detail).

7.5 Allegations of abuse made against other pupils

We recognise that children are capable of abusing their peers. Abuse will never be tolerated or passed off as "banter", "just having a laugh" or "part of growing up", as this can lead to a culture of unacceptable behaviours and an unsafe environment for pupils.

We also recognise the gendered nature of child-on-child abuse. However, all child-on-child abuse is unacceptable and will be taken seriously.

Most cases of pupils hurting other pupils will be dealt with under our school's behaviour policy, but this child protection and safeguarding policy will apply to any allegations that raise safeguarding concerns. This might include where the alleged behaviour:

- › Is serious, and potentially a criminal offence
- › Could put pupils in the school at risk
- › Is violent
- › Involves pupils being forced to use drugs or alcohol
- › Involves sexual exploitation, sexual abuse or sexual harassment, such as indecent exposure, sexual assault, upskirting or sexually inappropriate pictures or videos (including the sharing of nudes and semi-nudes)

See appendix 2 for more information about child-on-child abuse.

Procedures for dealing with allegations of child-on-child abuse

If a pupil makes an allegation of abuse against another pupil:

- › Staff must record the allegation and tell the DSL, but not investigate it
- › The DSL will contact the local authority children's social care team and follow its advice, as well as the police if the allegation involves a potential criminal offence
- › The DSL will put a risk assessment and support plan into place for all children involved (including the victim(s), the child(ren) against whom the allegation has been made and any others affected) with a named person they can talk to if needed. This will include considering school transport as a potentially vulnerable place for a victim or alleged perpetrator(s)
- › The DSL will contact the children and adolescent mental health services (CAMHS), if appropriate

If the incident is a criminal offence and there are delays in the criminal process, the DSL will work closely with the police (and other agencies as required) while protecting children and/or taking any disciplinary measures against the alleged perpetrator. We will ask the police if we have any questions about the investigation.

The DSL will take the lead role in any disciplining of the alleged perpetrator(s). We will provide support at the same time as taking any disciplinary action.

Disciplinary action can be taken while other investigations are going on, e.g. by the police. The fact that another body is investigating or has investigated an incident doesn't (in itself) prevent our school from coming to its own conclusion about what happened and imposing a penalty accordingly. We will consider these matters on a case-by-case basis, taking into account whether:

- › Taking action would prejudice an investigation and/or subsequent prosecution – we will liaise with the police and/or LA children's social care to determine this
- › There are circumstances that make it unreasonable or irrational for us to reach our own view about what happened while an independent investigation is ongoing

In order to minimise the risk of child on child abuse the Wye Forest Federation:

- Provides a developmentally appropriate PSHE and RSE curriculum through our use of the 1 decisions programme which develops pupils' understanding of acceptable behaviour and keeping themselves safe.
- Challenge any form of derogatory or sexualised language or inappropriate behaviour between peers including requesting or sending sexual images.
- Be vigilant to issues that particularly affect different genders – for example, sexualised or aggressive touching or grabbing towards female pupils, and initiation or hazing type violence with respect to boys.
- Has systems in place for any student to raise concerns with staff, knowing that they will be listened to, believed and valued. (see reporting systems for our pupils)
- Ensures victims, perpetrators and any other child affected by child on child abuse will be supported – see anti-bullying and hate incidents policy
- Develops robust risk assessments where appropriate (e.g. Using the Risk Assessment Management Plan and Safety and Support Plan tools).
- Have relevant policies in place (e.g. behaviour policy).
- Recognises that if there are no reported cases of child on child abuse, such abuse may still be taking place and is simply not being reported.

Staff should also refer to Part five of KCSiE (DfE 2023) – '**Child on child sexual violence and sexual harassment**':

<https://www.gov.uk/government/publications/keeping-children-safe-in-education--2>

Creating a supportive environment in school and minimising the risk of child-on-child abuse

We recognise the importance of taking proactive action to minimise the risk of child-on-child abuse, and of creating a supportive environment where victims feel confident in reporting incidents.

To achieve this, we will:

- › Challenge any form of derogatory or sexualised language or inappropriate behaviour between peers, including requesting or sending sexual images
- › Be vigilant to issues that particularly affect different genders – for example, sexualised or aggressive touching or grabbing towards female pupils, and initiation or hazing type violence with respect to boys
- › Ensure our curriculum helps to educate pupils about appropriate behaviour and consent
- › Ensure pupils are able to easily and confidently report abuse using our reporting systems (as described in section 7.7)
- › Ensure staff reassure victims that they are being taken seriously
- › Be alert to reports of sexual violence and/or harassment that may point to environmental or systemic problems that could be addressed by updating policies, processes and the curriculum, or could reflect wider issues in the local area that should be shared with safeguarding partners
- › Support children who have witnessed sexual violence, especially rape or assault by penetration. We will do all we can to make sure the victim, alleged perpetrator(s) and any witnesses are not bullied or harassed
- › Consider intra-familial harms and any necessary support for siblings following a report of sexual violence and/or harassment
- › Ensure staff are trained to understand:
 - How to recognise the indicators and signs of child-on-child abuse, and know how to identify it and respond to reports
 - That even if there are no reports of child-on-child abuse in school, it does not mean it is not happening – staff should maintain an attitude of “it could happen here”
 - That if they have any concerns about a child’s welfare, they should act on them immediately rather than wait to be told, and that victims may not always make a direct report. For example:
 - Children can show signs or act in ways they hope adults will notice and react to
 - A friend may make a report
 - A member of staff may overhear a conversation
 - A child’s behaviour might indicate that something is wrong
 - Some children may be particularly vulnerable and have an increased risk of abuse. The school will recognise that children with SEND or certain health conditions are three times more likely to be abused by their peers, can face additional safeguarding challenges and may be more prone to child-on-child group isolation or bullying (including prejudice-based bullying) than other children. The school will consider extra pastoral support for those children.
 - All pupils have the right to be safeguarded from harm regardless of race, religion, ethnicity, age, gender, sexuality or disability. The school will give special consideration to, amongst others, children who:
 - Have SEND.
 - Are vulnerable to being bullied.
 - Are looked after or living in unsupportive home situations
 - That a pupil harming a peer could be a sign that the child is being abused themselves, and that this would fall under the scope of this policy
 - The important role they have to play in preventing child-on-child abuse and responding where they believe a child may be at risk from it

- That they should speak to the DSL if they have any concerns
- That social media is likely to play a role in the fall-out from any incident or alleged incident, including for potential contact between the victim, alleged perpetrator(s) and friends from either side

7.6 Sharing of nudes and semi-nudes ('sexting')

[Sharing nudes and semi-nudes: advice for education settings working with children and young people \(updated March 2024\) - GOV.UK \(www.gov.uk\)](#)

Your responsibilities when responding to an incident

If you are made aware of an incident involving the consensual or non-consensual sharing of nude or semi-nude images/videos (also known as 'sexting' or 'youth produced sexual imagery'), you must report it to the DSL immediately.

You must **not**:

- › View, copy, print, share, store or save the imagery yourself, or ask a pupil to share or download it (if you have already viewed the imagery by accident, you must report this to the DSL)
- › Delete the imagery or ask the pupil to delete it
- › Ask the pupil(s) who are involved in the incident to disclose information regarding the imagery (this is the DSL's responsibility)
- › Share information about the incident with other members of staff, the pupil(s) it involves or their, or other, parents and/or carers
- › Say or do anything to blame or shame any young people involved

You should explain that you need to report the incident, and reassure the pupil(s) that they will receive support and help from the DSL.

Initial review meeting

Following a report of an incident, the DSL will hold an initial review meeting with appropriate school staff – this may include the staff member who reported the incident and the safeguarding or leadership team that deals with safeguarding concerns. This meeting will consider the initial evidence and aim to determine:

- › Whether there is an immediate risk to pupil(s)
- › If a referral needs to be made to the police and/or children's social care
- › If it is necessary to view the image(s) in order to safeguard the young person (in most cases, images or videos should not be viewed)
- › What further information is required to decide on the best response
- › Whether the image(s) has been shared widely and via what services and/or platforms (this may be unknown)
- › Whether immediate action should be taken to delete or remove images or videos from devices or online services
- › Any relevant facts about the pupils involved which would influence risk assessment
- › If there is a need to contact another school, college, setting or individual
- › Whether to contact parents or carers of the pupils involved (in most cases parents/carers should be involved)

The DSL will make an immediate referral to police and/or children's social care if:

- › The incident involves an adult
- › There is reason to believe that a young person has been coerced, blackmailed or groomed, or if there are concerns about their capacity to consent (for example, owing to SEN)

- › What the DSL knows about the images or videos suggests the content depicts sexual acts which are unusual for the young person's developmental stage, or are violent
- › The imagery involves sexual acts and any pupil in the images or videos is under 13
- › The DSL has reason to believe a pupil is at immediate risk of harm owing to the sharing of nudes and semi-nudes (for example, the young person is presenting as suicidal or self-harming)

If none of the above apply then the DSL, in consultation with the headteacher and other members of staff as appropriate, may decide to respond to the incident without involving the police or children's social care. The decision will be made and recorded in line with the procedures set out in this policy.

Further review by the DSL

If at the initial review stage a decision has been made not to refer to police and/or children's social care, the DSL will conduct a further review to establish the facts and assess the risks.

They will hold interviews with the pupils involved (if appropriate).

If at any point in the process there is a concern that a pupil has been harmed or is at risk of harm, a referral will be made to children's social care and/or the police immediately.

Informing parents/carers

The DSL will inform parents/carers at an early stage and keep them involved in the process, unless there is a good reason to believe that involving them would put the pupil at risk of harm.

Referring to the police

If it is necessary to refer an incident to the police, this will be done through dialling 101

Recording incidents

All incidents of sharing of nudes and semi-nudes, and the decisions made in responding to them, will be recorded. The record-keeping arrangements set out in section 14 of this policy also apply to recording these incidents.

Curriculum coverage

Pupils are taught about the issues surrounding the sharing of nudes and semi-nudes as part of our relationships and sex education and computing programmes. Teaching covers the following in relation to the sharing of nudes and semi-nudes:

- › What it is
- › How it is most likely to be encountered
- › The consequences of requesting, forwarding or providing such images, including when it is and is not abusive and when it may be deemed as online sexual harassment
- › Issues of legality
- › The risk of damage to people's feelings and reputation

Pupils also learn the strategies and skills needed to manage:

- › Specific requests or pressure to provide (or forward) such images
- › The receipt of such images

This policy on the sharing of nudes and semi-nudes is also shared with pupils so they are aware of the processes the school will follow in the event of an incident.

7.7 Reporting systems for our pupils

Where there is a safeguarding concern, we will take the child's wishes and feelings into account when determining what action to take and what services to provide.

We recognise the importance of ensuring pupils feel safe and comfortable to come forward and report any concerns and/or allegations.

To achieve this, we will:

Undertake daily emotional check ins with all pupils

Have worry boxes for pupils to place their concerns in if they feel they are unable to speak to an adult directly.

Ensure pupils know they can express their worries safely at any time of the school day – this will be promoted often through mental health and wellbeing learning and PSHE.

Ensure pupils know how any adult will respond to their worries in a consistent manner, know their concerns will be taken seriously and that they can safely express their views and give feedback - this will be promoted often through mental health and wellbeing learning and PSHE.

8. Online safety and the use of mobile technology

The school will adhere to the Online Safety Policy at all times. As part of a broad and balanced curriculum, all pupils will be made aware of online risks and taught how to stay safe online.

Through training, all staff members will be made aware of:

- Pupil attitudes and behaviours which may indicate they are at risk of potential harm online.
- The procedure to follow when they have a concern regarding a pupil's online activity.

Staff training in online safety will cover the four categories of risk as outlined in KCSIE:

- **Content** - Staff will be trained to understand the risks associated with being exposed to illegal, inappropriate, or harmful material. This will include, but not be limited to, content relating to pornography, racism, misogyny, self-harm, suicide, anti-Semitism, radicalisation, extremism, misinformation, disinformation, and conspiracy theories.
- **Contact** - Training will address the risks of harmful online interaction with other users. This will include peer to-peer pressure, exposure to commercial advertising, and the threat posed by adults impersonating children or young people with the intention of grooming or exploiting them for sexual, criminal, financial, or other purposes.
- **Conduct** - Staff will be made aware of how certain online behaviours may increase the likelihood of harm or result in actual harm. This will encompass activities such as creating, sending, or receiving explicit images, the distribution of other explicit material, and instances of online bullying.
- **Commerce** - The programme will also cover risks related to online commerce. These will include dangers such as online gambling, exposure to inappropriate advertising, phishing attempts, and other types of financial scams. Any concerns that pupils or staff may be at risk will be reported promptly to the Anti-Phishing Working Group or through appropriate safeguarding channels.

The school will ensure that appropriate filtering systems are in place on school devices and school networks to prevent children accessing inappropriate material, in accordance with the school's **Cyber-security Policy**. The appropriateness of the school's filters and monitoring systems will be informed by the Filtering and monitoring standards, the Cyber security standards for schools and colleges, and the risk assessment required by the Prevent Duty. The school will, however, ensure that the use of filtering and monitoring systems does not cause "over blocking", which may lead to unreasonable restrictions as to what pupils can be taught online. The school will also ensure that it meets the filtering and monitoring standards published by the DfE. Staff will be aware of the filtering and monitoring systems in place and will know how to escalate concerns where they are identified. Staff will be made aware of their expectations and responsibilities relating to filtering and monitoring systems during their induction.

Further information regarding the school's approach to online safety can be found in the Online Safety Policy.

Communicating with parents

As part of the usual communication with parents, the school will reinforce the importance of pupils being safe online and inform parents that they will find it helpful to understand what systems the school uses to filter and monitor internet use.

The school will also make it clear to parents what their children are being asked to do online for school.

Reviewing online safety The school will carry out an annual review of its approach to online safety, supported by an annual risk assessment that considers and reflects the risks faced by pupils.

Personal electronic devices

The use of personal electronic devices, including mobile phones and cameras, by staff and pupils is closely monitored by the school, in accordance with the [Staff ICT and Electronic Devices Policy and Pupils' Personal Electronic Devices Policy](#).

Photographs and videos of pupils will be carefully planned before any activity with particular regard to consent and adhering to the school's Data Protection Policy and Photography and Images Policy.

Where photographs and videos will involve pupils who are LAC, adopted pupils, or pupils for whom there are security concerns, the headteacher will liaise with the DSL to determine the steps involved. The DSL will, in known cases of pupils who are LAC or who have been adopted, liaise with the pupils' social workers, carers or adoptive parents to assess the needs and risks associated with the pupils.

Staff will report any concerns about pupils' or other staff members' use of personal electronic devices to the DSL, following the appropriate procedures.

8.1 Artificial intelligence (AI)

Generative artificial intelligence (AI) tools are now widespread and easy to access. Staff, pupils and parents/carers may be familiar with generative chatbots such as ChatGPT and Google Bard.

The Wye Forest Federation recognises that AI has many uses, including enhancing teaching and learning, and in helping to protect and safeguard pupils. However, AI may also have the potential to facilitate abuse (e.g. bullying and grooming) and/or expose pupils to harmful content. For example, in the form of 'deepfakes', where AI is used to create images, audio or video hoaxes that look real.

The Wye Forest Federation will treat any use of AI to access harmful content or bully pupils in line with this policy and our anti-bullying and hate policy.

Staff should be aware of the risks of using AI tools whilst they are still being developed and should carry out risk assessments for any new AI tool being used by the school.

All use of AI will take account of the DfE guidance [Generative AI: Product Safety Expectations](#)

9. Notifying parents or carers

Where appropriate, we will discuss any concerns about a child with the child's parents or carers. The DSL will normally do this in the event of a suspicion or disclosure.

Other staff will only talk to parents or carers about any such concerns following consultation with the DSL.

If we believe that notifying the parents or carers would increase the risk to the child, we will discuss this with the local authority children's social care team before doing so.

In the case of allegations of abuse made against other children, we will normally notify the parents or carers of all the children involved. We will think carefully about what information we provide about the other child involved, and when. We will work with the police and/or local authority children's social care to make sure our approach to information sharing is consistent.

The DSL will, along with any relevant agencies (this will be decided on a case-by-case basis):

- › Meet with the victim's parents or carers, with the victim, to discuss what's being put in place to safeguard them, and understand their wishes in terms of what support they may need and how the report will be progressed
- › Meet with the alleged perpetrator's parents or carers to discuss support for them, and what's being put in place that will impact them, e.g. moving them out of classes with the victim, and the reason(s) behind any decision(s)

›

10. Pupils with special educational needs, disabilities or health issues

We recognise that pupils with SEND or certain health conditions can face additional safeguarding challenges, and are 3 times more likely to be abused than their peers. Additional barriers can exist when recognising abuse and neglect in this group, including:

- › Assumptions that indicators of possible abuse such as behaviour, mood and injury relate to the child's condition without further exploration
- › Pupils being more prone to peer group isolation or bullying (including prejudice-based bullying) than other pupils
- › The potential for pupils with SEN, disabilities or certain health conditions being disproportionately impacted by behaviours such as bullying, without outwardly showing any signs
- › Communication barriers and difficulties in managing or reporting these challenges

Any abuse involving pupils with SEND will require close liaison with the DSL (or deputy) and the SENCO.

11. Pupils with a social worker

Pupils may need a social worker due to safeguarding or welfare needs. We recognise that a child's experiences of adversity and trauma can leave them vulnerable to further harm as well as potentially creating barriers to attendance, learning, behaviour and mental health.

The DSL and all members of staff will work with and support social workers to help protect vulnerable children.

Where we are aware that a pupil has a social worker, the DSL will always consider this fact to ensure any decisions are made in the best interests of the pupil's safety, welfare and educational outcomes. For example, it will inform decisions about:

- › Responding to unauthorised absence or missing education where there are known safeguarding risks
- › The provision of pastoral and/or academic support

12. Looked-after and previously looked-after children

We will ensure that staff have the skills, knowledge and understanding to keep looked-after children and previously looked-after children safe. In particular, we will ensure that:

- › Appropriate staff have relevant information about children's looked after legal status, contact arrangements with birth parents or those with parental responsibility, and care arrangements
- › The DSL has details of children's social workers and relevant virtual school heads

We have appointed a designated teacher, Amy Wilson, who is responsible for promoting the educational achievement of looked-after children and previously looked-after children in line with [statutory guidance](#).

The designated teacher is appropriately trained and has the relevant qualifications and experience to perform the role.

As part of their role, the designated teacher will:

- › Work closely with the DSL to ensure that any safeguarding concerns regarding looked-after and previously looked-after children are quickly and effectively responded to
- › Work with virtual school heads to promote the educational achievement of looked-after and previously looked-after children, including discussing how pupil premium plus funding can be best used to support looked-after children and meet the needs identified in their personal education plans.

›

13. Complaints and concerns about school safeguarding policies

All staff and volunteers should feel able to raise concerns about poor or unsafe practice and potential failures in the federation or education setting's safeguarding arrangements.

13.1 Complaints against staff

Complaints against staff that are likely to require a child protection investigation will be handled in accordance with our procedures for dealing with allegations of abuse made against staff (see appendix 2).

13.2 Other complaints

Wider complaints linked to safeguarding will be handled in accordance with our complaints policy or if linked our Early Years settings, in accordance with the requirements set out in the safeguarding and welfare section of the statutory framework for the Early Years Foundation Stage (paragraph 3.7).

13.3 Whistle-blowing

The Wye Forest Federation policy and procedures for Whistle-blowing can be found within the Staff Code of Conduct.

14. Record-keeping

We will hold records in line with our records retention schedule.

All safeguarding concerns, discussions, decisions made and the reasons for those decisions, must be recorded in writing. If you are in any doubt about whether to record something, discuss it with the DSL.

Records will include:

- › A clear and comprehensive summary of the concern
- › Details of how the concern was followed up and resolved
- › A note of any action taken, decisions reached and the outcome

Concerns and referrals will be kept in a separate child protection file for each child.

Any non-confidential records will be readily accessible and available. Confidential information and records will be held securely and only available to those who have a right or professional need to see them.

Safeguarding records relating to individual children will be retained for a reasonable period of time after they have left the school.

If a child for whom the school has, or has had, safeguarding concerns moves to another school, the DSL will ensure that their child protection file is forwarded as soon as possible, securely, and separately from the main pupil file.

To allow the new school/college to have support in place when the child arrives, this should be within:

- › **5 days** for an in-year transfer, or within
- › **The first 5 days** of the start of a new term

In addition, if the concerns are significant or complex, and/or social services are involved, the DSL will speak to the DSL of the receiving school and provide information to enable them to have time to make any necessary preparations to ensure the safety of the child.

At the Wye Forest Federation we:

- **Record as soon as possible and at least on the same day** after the conversation.
- Use the Child Protection Recording system **CPOMS**.
- Ensure the date, time, place is recorded, and any noticeable non-verbal behaviour and the words used by the child.

- Use the body map on CPOMS to indicate the position of any injuries and a clear description of the injury.
- Record statements and observations rather than interpretations, assumptions or opinions.
- Do not destroy the original records in case they are needed by a court.
- All records need to be given to the DSL promptly. No copies should be retained by the member of staff or volunteer.

The DSL will ensure that all safeguarding records are managed in accordance with the Education (Pupil Information) (England) Regulations 2005.

In addition:

- › Our Safer Recruitment policy sets out our record-keeping with respect to recruitment and pre-appointment checks
- › Appendix 2 sets out our policy on record-keeping with respect to allegations of abuse made against staff.

15. Training

15.1 All staff

All staff members will undertake safeguarding and child protection training at induction, including on whistle-blowing procedures and online safety, to ensure they understand the school's safeguarding systems and their responsibilities, and can identify signs of possible abuse or neglect.

This training will be regularly updated and will:

- › Be integrated, aligned and considered as part of the whole-school safeguarding approach and wider staff training, and curriculum planning
- › Be in line with advice from the 3 safeguarding partners
- › Include online safety, including an understanding of the expectations, roles and responsibilities for staff around filtering and monitoring
- › Have regard to the Teachers' Standards to support the expectation that all teachers:
 - Manage behaviour effectively to ensure a good and safe environment
 - Have a clear understanding of the needs of all pupils

All staff will have training on the government's anti-radicalisation strategy, Prevent, to enable them to identify children at risk of being drawn into terrorism and to challenge extremist ideas.

Staff will also receive regular safeguarding and child protection updates, including on online safety, as required but at least annually (for example, through emails, e-bulletins and staff meetings).

Contractors who are provided through a private finance initiative (PFI) or similar contract will also receive safeguarding training.

Volunteers will receive appropriate training, if applicable.

15.2 The DSL and deputies

The DSL and deputies will undertake child protection and safeguarding training at least every 2 years.

In addition, they will update their knowledge and skills at regular intervals and at least annually (for example, through e-bulletins, meeting other DSLs, or taking time to read and digest safeguarding developments).

They will also undertake Prevent awareness training.

15.3 Governors

All governors receive training about safeguarding and child protection (including online safety) at induction, which is regularly updated. This is to make sure that they:

- › Have the knowledge and information needed to perform their functions and understand their responsibilities, such as providing strategic challenge
- › Can be assured that safeguarding policies and procedures are effective and support the school to deliver a robust whole-school approach to safeguarding

As the chair of governors may be required to act as the 'case manager' in the event that an allegation of abuse is made against the headteacher, they receive training in managing allegations for this purpose.

15.4 Recruitment – interview panels

At least 1 person conducting any interview for any post at the school will have undertaken safer recruitment training. This will cover, as a minimum, the contents of Keeping Children Safe in Education, and will be in line with local safeguarding procedures.

See our safer recruitment policy for more information about our safer recruitment procedures.

1

5.5 Staff who have contact with pupils and families

All staff who have contact with children and families will have supervision which will provide them with support, coaching and training, promote the interests of children and allow for confidential discussions of sensitive issues.

16. Monitoring arrangements

This policy will be reviewed **annually** by Natalie Frey – Executive Headteacher/ DSL. At every review, it will be approved by the full governing board.

17. Links with other policies

This policy links to the following policies and procedures:

- › Behaviour
- › Anti-bullying and hate
- › Staff code of conduct and Whistle-blowing
- › Safer Recruitment
- › Staff Appraisal and Capability
- › Allegations Against Staff and Low Level Concerns
- › Confidentiality
- › Data Protection
- › Complaints
- › Health and safety
- › Attendance
- › Suspensions and Exclusions
- › Online safety
- › Acceptable Use
- › Mobile phone and smart device use
- › Equality

- › SEND
- › Relationships, Health and Sex Education (RSHE)
- › Personal, Social, Health Education
- › Drugs
- › First aid
- › Curriculum
- › Looked-after and previously looked-after children
- › Privacy notices

These appendices are based on the Department for Education's statutory guidance, Keeping Children Safe in Education.

Appendix 1: types of abuse

Abuse, a form of maltreatment of a child. Somebody may abuse or neglect a child by inflicting harm or by failing to prevent harm. Harm can include treatment that is not physical as well as the impact of witnessing ill treatment of others. This can be particularly relevant, for example, in relation to the impact on children of all forms of domestic abuse, including where they see, hear or experience its effects. Children may be abused in a family or in an institutional or community setting by those known to them, or more rarely by others. Abuse can take place wholly online, or technology may be used to facilitate offline abuse. Children may be abused by an adult, adults or by another child or children.

Physical abuse may involve hitting, shaking, throwing, poisoning, burning or scalding, drowning, suffocating or otherwise causing physical harm to a child. Physical harm may also be caused when a parent or carer fabricates the symptoms of, or deliberately induces, illness in a child.

Emotional abuse is the persistent emotional maltreatment of a child such as to cause severe and adverse effects on the child's emotional development. Some level of emotional abuse is involved in all types of maltreatment of a child, although it may occur alone.

Emotional abuse may involve:

- › Conveying to a child that they are worthless or unloved, inadequate, or valued only insofar as they meet the needs of another person
- › Not giving the child opportunities to express their views, deliberately silencing them or 'making fun' of what they say or how they communicate
- › Age or developmentally inappropriate expectations being imposed on children. These may include interactions that are beyond a child's developmental capability, as well as overprotection and limitation of exploration and learning, or preventing the child participating in normal social interaction
- › Seeing or hearing the ill-treatment of another
- › Serious bullying (including cyber-bullying), causing children frequently to feel frightened or in danger, or the exploitation or corruption of children

Sexual abuse involves forcing or enticing a child or young person to take part in sexual activities, not necessarily involving violence, whether or not the child is aware of what is happening. The activities may involve:

- › Physical contact, including assault by penetration (for example, rape or oral sex) or non-penetrative acts such as masturbation, kissing, rubbing and touching outside of clothing
- › Non-contact activities, such as involving children in looking at, or in the production of, sexual images, watching sexual activities, encouraging children to behave in sexually inappropriate ways, or grooming a child in preparation for abuse (including via the internet)

Sexual abuse can take place online, and technology can be used to facilitate offline abuse.

Sexual abuse is not solely perpetrated by adult males. Women can also commit acts of sexual abuse, as can other children. The sexual abuse of children by other children is a specific safeguarding issue in education and all staff should be aware of it.

Neglect is the persistent failure to meet a child's basic physical and/or psychological needs, likely to result in the serious impairment of the child's health or development. Neglect may occur during pregnancy as a result of maternal substance abuse.

Once a child is born, neglect may involve a parent or carer failing to:

- › Provide adequate food, clothing and shelter (including exclusion from home or abandonment)
- › Protect a child from physical and emotional harm or danger
- › Ensure adequate supervision (including the use of inadequate care-givers)
- › Ensure access to appropriate medical care or treatment

It may also include neglect of, or unresponsiveness to, a child's basic emotional needs.

Specific Safeguarding Issues:

Here we set out details of specific safeguarding issues that pupils could experience and outline specific actions that would be taken in relation to each issue. This is based upon Annex B in KCSiE which contains further information in respect to these issues

[Keeping children safe in education 2024 \(publishing.service.gov.uk\)](https://publishing.service.gov.uk)

For quick reference:

Child abduction and community safety incidents

Child Criminal Exploitation (CCE) and Child Sexual Exploitation (CSE)

County lines

Children and the court system

Children absent from education

Children with family members in prison

Cybercrime

Domestic abuse

Homelessness

Mental health

Modern Slavery and the National Referral Mechanism

Preventing radicalisation

The Prevent duty

Sexual violence and sexual harassment between children in schools and colleges

Serious Violence

So-called 'honour'-based abuse (including Female Genital Mutilation and Forced Marriage)

FGM

FGM mandatory reporting duty for teachers

Forced marriage

Child abduction and community safety incidents

Child abduction is the unauthorised removal or retention of a minor from a parent or anyone with legal responsibility for the child. Child abduction can be committed by parents or other family members; by people known but not related to the victim (such as neighbours, friends and acquaintances); and by strangers.

All staff will be aware of community safety incidents in the vicinity of a school can raise concerns amongst children and parents, for example, people loitering nearby or unknown adults engaging children in conversation.

Pupils will be provided with practical advice and lessons to ensure they can keep themselves safe outdoors.

Child Criminal Exploitation (CCE) and Child Sexual Exploitation (CSE)

We know that different forms of harm often overlap, and that perpetrators may subject children and young people to multiple forms of abuse, such as criminal exploitation (including county lines) and sexual exploitation.

In some cases, the exploitation or abuse will be in exchange for something the victim needs or wants (for example, money, gifts or affection), and/or will be to the financial benefit or other advantage, such as increased status, of the perpetrator or facilitator.

Children can be exploited by adult males or females, as individuals or groups. They may also be exploited by other children, who themselves may be experiencing exploitation – where this is the case, it is important that the child perpetrator is also recognised as a victim.

Whilst the age of the child may be a contributing factor for an imbalance of power, there are a range of other factors that could make a child more vulnerable to exploitation, including, sexual identity, cognitive ability, learning difficulties, communication ability, physical strength, status, and access to economic or other resources.

Staff will be aware of the following, which can be indicators of both child criminal and sexual exploitation where children:

- appear with unexplained gifts, money or new possessions
- associate with other children involved in exploitation
- suffer from changes in emotional well-being
- misuse alcohol and other drugs
- go missing for periods of time or regularly come home late, and
- regularly miss school or education or do not take part in education.

Children who have been exploited will need additional support to help keep them in education. The school will work with children, families and wider agencies to ensure this is in place.

Child Sexual Exploitation (CSE) can be a one-off occurrence or a series of incidents over time and range from opportunistic to complex organised abuse. It can involve force and/or enticement-based methods of compliance and may, or may not, be accompanied by violence or threats of violence.

Staff will also be aware that additional specific indicators that may be present in CSE are children who:

- have older boyfriends or girlfriends; and
- suffer from sexually transmitted infections, display sexual behaviours beyond expected sexual development or become pregnant.

All concerns related to CCE and CSE will be managed in line with procedure set out in Section 7 of this policy.

County lines

County lines is a term used to describe gangs and organised criminal networks involved in exporting illegal drugs using dedicated mobile phone lines or other form of “deal line”. This activity can happen locally as well as across the UK - no specified distance of travel is required. Children and vulnerable adults are exploited to move, store and sell drugs and money. Offenders will often use coercion, intimidation, violence (including sexual violence) and weapons to ensure compliance of victims.

Children can be targeted and recruited into county lines in a number of locations including any type of schools (including special schools), further and higher educational institutions, pupil referral units, children’s homes and care homes. Children are also increasingly being targeted and recruited online using social media.

Children can easily become trapped by this type of exploitation as county lines gangs can manufacture drug debts which need to be worked off or threaten serious violence and kidnap towards victims (and their families)

if they attempt to leave the county lines network. A number of the indicators for CCE and CSE as detailed above may be applicable to where children are involved in county lines.

Staff will be aware of additional specific indicators that may be present where a child is criminally exploited through involvement in county lines are children who:

- go missing (from school or home) and are subsequently found in areas away from their home
- have been the victim, perpetrator or alleged perpetrator of serious violence (e.g. knife crime)
- are involved in receiving requests for drugs via a phone line, moving drugs, handing over and collecting money for drugs
- are exposed to techniques such as 'plugging', where drugs are concealed internally to avoid detection
- are found in accommodation that they have no connection with, often called a 'trap house or cuckooing' or hotel room where there is drug activity
- owe a 'debt bond' to their exploiters
- have their bank accounts used to facilitate drug dealing.

Staff will be made aware of pupils who may be involved in County Lines. Staff members who suspect a pupil may be vulnerable to or involved in county lines activity will immediately report all concerns to the DSL.

The DSL will consider referral to the National Referral Mechanism on a case-by-case basis and consider involving local services and providers who offer support to victims of county lines exploitation.

Children and the court system

Children are sometimes required to give evidence in criminal courts, either for crimes committed against them or for crimes they have witnessed. There are two age appropriate guides to support children 5-11-year olds and 12-17 year olds. The guides explain each step of the process, support and special measures that are available. There are diagrams illustrating the courtroom structure and the use of video links is explained.

Where we are aware that a child is required to attend court, we will offer support to the child and their family as appropriate.

Making child arrangements via the family courts following separation can be stressful and entrench conflict in families. This can be stressful for children. The Ministry of Justice has launched an online child arrangements information tool with clear and concise information on the dispute resolution service. Where parents request support in this case, we will signpost them to this tool and consider involving local services and providers who offer further support in these circumstances. We will also consider on a case-by-case basis what support the child/ children may need from the school during this period of time.

Children who are absent from education

All staff will be aware that children being absent from school or college, particularly repeatedly and/or for prolonged periods, and children missing education can act as a vital warning sign of a range of safeguarding possibilities. This may include abuse and neglect such as sexual abuse or exploitation and can also be a sign of child criminal exploitation including involvement in county lines. It may indicate mental health problems, risk of substance abuse, risk of travelling to conflict zones, risk of female genital mutilation, so called 'honour'-based abuse or risk of forced marriage.

Early intervention is essential to identify the existence of any underlying safeguarding risk and to help prevent the risks of a child going missing in future. Staff will be aware of unauthorised absence procedures and children who are absent from education procedures as set out in the federation attendance and children absent from education policies and raise any concerns with the DSL who will follow the procedures set out promptly where appropriate.

Children with family members in prison

Approximately 200,000 children in England and Wales have a parent sent to prison each year. These children are at risk of poor outcomes including poverty, stigma, isolation and poor mental health.

Staff will be made aware of any children with family members in prison or where family members are at risk of going to prison. We will also consider on a case-by-case basis what support the child/ children may need from the school to support them with this.

Cybercrime

Cybercrime is criminal activity committed using computers and/or the internet. It is broadly categorised as either 'cyber-enabled' (crimes that can happen off-line but are enabled at scale and at speed on-line) or 'cyber dependent' (crimes that can be committed only by using a computer). Cyber-dependent crimes include:

- unauthorised access to computers (illegal 'hacking'), for example accessing a school's computer network to look for test paper answers or change grades awarded
- 'Denial of Service' (Dos or DDoS) attacks or 'booting'. These are attempts to make a computer, network or website unavailable by overwhelming it with internet traffic from multiple sources, and,
- making, supplying or obtaining malware (malicious software) such as viruses, spyware, ransomware, botnets and Remote Access Trojans with the intent to commit further offence, including those above.

Children with particular skills and interest in computing and technology may inadvertently or deliberately stray into cyber-dependent crime.

Where there are concerns about a child in this area, the designated safeguarding lead (or a deputy), will consider referring into the Cyber Choices programme.

Domestic abuse

The Domestic Abuse Act 2021 received Royal Assent on 29 April 2021. The Act introduced the first ever statutory definition of domestic abuse and recognises the impact of domestic abuse on children, as victims in their own right, if they see, hear or experience the effects of abuse. The statutory definition of domestic abuse, based on the previous cross-government definition, ensures that different types of relationships are captured, including ex-partners and family members. The definition captures a range of different abusive behaviours, including physical, emotional and economic abuse and coercive and controlling behaviour. Under the statutory definition, both the person who is carrying out the behaviour and the person to whom the behaviour is directed towards must be aged 16 or over and they must be "personally connected" (as defined in section 2 of the 2021 Act).

Types of domestic abuse include intimate partner violence, abuse by family members, teenage relationship abuse and child to parent abuse. Anyone can be a victim of domestic abuse, regardless of sexual identity, age, ethnicity, socio-economic status, sexuality or background and domestic abuse can take place inside or outside of the home. The government has issued statutory guidance to provide further information for those working with domestic abuse victims and perpetrators, including the impact on children.

All staff will be aware that children can witness and be adversely affected by domestic abuse in the context of their home life where domestic abuse occurs between family members. Experiencing domestic abuse can have a serious, long lasting emotional and psychological impact on children. In some cases, a child may blame themselves for the abuse or may have had to leave the family home as a result. Where staff have concerns around domestic abuse, they will follow the appropriate procedures as set out in section 7 of this policy. We will also consider on a case-by-case basis what support the child/ children may need from the school to support them with this.

Operation Encompass

Operation Encompass operates in all police forces across England. It helps police and schools work together to provide emotional and practical help to children. The system ensures that when the police are called to an incident of domestic abuse, where there are children in the household who have experienced the domestic

incident, the police will inform the key adult (usually the designated safeguarding lead (or a deputy)) in school before the child or children arrive at school the following day. This ensures that the school has up to date relevant information about the child's circumstances and can enable immediate support to be put in place, according to the child's needs. Operation Encompass does not replace statutory safeguarding procedures. Where appropriate, the police and/or schools should make a referral to local authority children's social care if they are concerned about a child's welfare.

As part of The Wye Forest Federation's commitment to keeping children safe we have signed up to implement the principles and aims of the Gloucestershire Encompass Model.

In signing up to Gloucestershire Encompass the Governing Body/Proprietor and Senior Leadership Team:

- Endorse the Gloucestershire Encompass Model and support the Key Adults in our school to fulfil the requirements of the Gloucestershire Encompass Protocol.
- Promote and implement Gloucestershire Encompass processes and use these in accordance with internal safeguarding children processes.
- Recognise the sensitive nature of the information provided and ensure that this is retained in accordance with the principles of data protection.

Homelessness

Being homeless or being at risk of becoming homeless presents a real risk to a child's welfare. The designated safeguarding lead (and any deputies) will be aware of contact details and referral routes into the Local Housing Authority and will raise/progress concerns at the earliest opportunity.

Staff will be aware of indicators that a family may be at risk of homelessness include household debt, rent arrears, domestic abuse and anti-social behaviour, as well as the family being asked to leave a property and report these to the DSL.

Whilst referrals and/or discussion with the Local Housing Authority will be progressed as appropriate, and in accordance with local procedures, this will not replace a referral into local authority children's social care where a child has been harmed or is at risk of harm.

Mental health

Where children have suffered abuse and neglect, or other potentially traumatic adverse childhood experiences, this can have a lasting impact throughout childhood, adolescence and into adulthood. It is key that staff are aware of how these children's experiences, can impact on their mental health, behaviour, attendance and progress at school.

Staff will be alert to behavioural signs that suggest a child may be experiencing a mental health problem or be at risk of developing one.

If you have a mental health concern about a child that is also a safeguarding concern, take immediate action by following the steps in section 7.4.

If you have a mental health concern that is **not** also a safeguarding concern, speak to the DSL to agree a course of action.

Modern Slavery and the National Referral Mechanism

Modern slavery encompasses human trafficking and slavery, servitude and forced or compulsory labour. Exploitation can take many forms, including sexual exploitation, forced labour, slavery, servitude, forced criminality and the removal of organs. Further information on the signs that someone may be a victim of modern slavery, the support available to victims and how to refer them to the NRM is available in Statutory Guidance. Modern slavery: how to identify and support victims - GOV.UK Where we have a concern related to modern slavery, the DSL will refer to the information and guidance referred to above.

Preventing radicalisation

Note: This preventing radicalisation section remains under review, following the publication of a new definition of extremism on the 14 March 2024.

Children may be susceptible to radicalisation into terrorism. Similar to protecting children from other forms of harms and abuse, protecting children from this risk should be a part of a schools or colleges safeguarding approach.

Extremism is the vocal or active opposition to our fundamental values, including democracy, the rule of law, individual liberty and the mutual respect and tolerance of different faiths and beliefs. This also includes calling for the death of members of the armed forces.

Radicalisation is the process of a person legitimising support for, or use of, terrorist violence.

Terrorism is an action that endangers or causes serious violence to a person/people; causes serious damage to property; or seriously interferes or disrupts an electronic system. The use or threat must be designed to influence the government or to intimidate the UK Health Security Agency and the Office for Health Improvement and Disparities (OHID), which is part of the Department of Health and Social Care, and by the UK Health Security Agency.

Although there is no single way of identifying whether a child is likely to be susceptible to radicalisation into terrorism, there are factors that may indicate concern.

It is possible to protect people from extremist ideology and intervene to prevent those at risk of radicalisation being drawn to terrorism.

As with other safeguarding risks, staff will be alert to changes in children's behaviour, which could indicate that they may be in need of help or protection. Staff will use their judgement in identifying children who might be at risk of radicalisation and act proportionately which may include the designated safeguarding lead (or a deputy) making a Prevent referral.

The DfE also has a dedicated telephone helpline, 020 7340 7264, which school staff and governors can call to raise concerns about extremism with respect to a pupil. You can also email counter.extremism@education.gov.uk. Note that this is not for use in emergency situations.

In an emergency, call 999 or the confidential anti-terrorist hotline on 0800 789 321 if you:

- › Think someone is in immediate danger
- › Think someone may be planning to travel to join an extremist group
- › See or hear something that may be terrorist-related

The Prevent duty

All schools and colleges are subject to a duty under section 26 of the Counter- Terrorism and Security Act 2015, in the exercise of their functions, to have "due regard to the need to prevent people from becoming terrorists or supporting terrorism". This duty is known as the Prevent duty.

The Prevent duty is seen as part of schools' wider safeguarding obligations. Designated safeguarding leads (and deputies) will undertake Prevent training every 2 years. They and other senior leaders will be familiar with the revised Prevent duty guidance: for England and Wales, especially paragraphs 141-210, which are specifically concerned with education (and also covers childcare) and ensure all staff undertake regular training linked to this.

The school designated safeguarding lead (and any deputies) will be aware of local procedures for making a Prevent referral including how to engage in and implement the channel programme.

Sexual violence and sexual harassment between children in schools

Sexual violence and sexual harassment can occur between two children of any age and sex from primary to secondary stage and into colleges. It can also occur online. It can also occur through a group of children sexually assaulting or sexually harassing a single child or group of children.

Children who are victims of sexual violence and sexual harassment will likely find the experience stressful and distressing. This will, in all likelihood, adversely affect their educational attainment and will be exacerbated if the alleged perpetrator(s) attends the same school.

Sexual violence and sexual harassment exist on a continuum and may overlap, they can occur online and face to face (both physically and verbally) and are never acceptable.

We will ensure that all victims are reassured that they are being taken seriously and that they will be supported and kept safe. A victim should never be given the impression that they are creating a problem by reporting sexual violence or sexual harassment. Nor should a victim ever be made to feel ashamed for making a report. Detailed advice is available in Part five of KCSiE and this will be referred to should a case arise.

Serious Violence

Staff will be aware that there are a number of indicators, which may signal children are at risk from, or are involved with, serious violent crime. These may include:

- increased absence from school
- a change in friendships or relationships with older individuals or groups
- a significant decline in performance• signs of self-harm or a significant change in wellbeing, or signs of assault or unexplained injuries
- unexplained gifts or new possessions could also indicate that children have been approached by, or are involved with, individuals associated with criminal networks or gangs and may be at risk of criminal exploitation.

They will also recognise the likelihood of involvement in serious violence may be increased by factors such as:

- being male
- having been frequently absent or permanently excluded from school
- having experienced child maltreatment and having been involved in offending, such as theft or robbery.

A fuller list of risk factors can be found in the Home Office's Serious Violence Strategy.

Staff will be aware that violence can often peak in the hours just before or just after school, when pupils are travelling to and from school. These times can be particularly risky for young people involved in serious violence. If staff suspect a pupil may be vulnerable to, or involved in, serious violent crime, they will immediately report their concerns to the DSL.

So-called 'honour'-based abuse (including Female Genital Mutilation and Forced Marriage)

So-called 'honour'-based abuse (HBA) encompasses incidents or crimes which have been committed to protect or defend the honour of the family and/or the community, including female genital mutilation (FGM), forced marriage, and practices such as breast ironing.

Abuse committed in the context of preserving 'honour' often involves a wider network of family or community pressure and can include multiple perpetrators. It is important to be aware of this dynamic and additional risk factors when deciding what form of safeguarding action to take. All forms of HBA are abuse (regardless of the motivation) and should be handled and escalated as such. Professionals in all agencies, and individuals and groups in relevant communities, need to be alert to the possibility of a child being at risk of HBA, or already having suffered HBA.

Actions If staff have a concern regarding a child who might be at risk of HBA or who has suffered from HBA, they should speak to the designated safeguarding lead (or a deputy). As appropriate, the designated safeguarding lead (or a deputy) will activate local safeguarding procedures, using existing national and local protocols for multi-agency liaison with the police and local authority children's social care.

FGM

Keeping Children Safe in Education explains that FGM comprises "all procedures involving partial or total removal of the external female genitalia, or other injury to the female genital organs".

FGM is illegal in the UK and a form of child abuse with long-lasting, harmful consequences. It is also known as 'female genital cutting', 'circumcision' or 'initiation'.

Any teacher who either:

- Is informed by a girl under 18 that an act of FGM has been carried out on her; or

- Observes physical signs which appear to show that an act of FGM has been carried out on a girl under 18 and they have no reason to believe that the act was necessary for the girl's physical or mental health or for purposes connected with labour or birth

Must immediately report this to the police, personally. This is a mandatory statutory duty, and teachers will face disciplinary sanctions for failing to meet it.

In this instance, the police will be contacted via 101 to make the report.

Should it be considered that a child is at immediate risk of harm from FGM, then 999 will be dialled.

Unless they have been specifically told not to disclose, they should also discuss the case with the DSL and involve children's social care as appropriate.

Any other member of staff who discovers that an act of FGM appears to have been carried out on a **pupil under 18** must speak to the DSL and follow our local safeguarding procedures.

The duty for teachers mentioned above does not apply in cases where a pupil is *at risk* of FGM or FGM is suspected but is not known to have been carried out. Staff should not examine pupils.

Any member of staff who suspects a pupil is *at risk* of FGM or suspects that FGM has been carried out should speak to the DSL and follow our local safeguarding procedures.

Further support for staff when dealing with cases of FGM can be sought from:

National FGM helpline 0800 028 3550

NSPCC

Gloucestershire MASH 01452 565

Monmouthshire MASH 01291 635 669

Crimestoppers 0800 111 111

Forced marriage

Forcing a person into a marriage is a crime in England and Wales. A forced marriage is one entered into without the full and free consent of one or both parties and where violence, threats or any other form of coercion is used to cause a person to enter into a marriage. Threats can be physical or emotional and psychological. A lack of full and free consent can be where a person does not consent or where they cannot consent (if they have learning disabilities, for example). Nevertheless, some perpetrators use perceived cultural practices to coerce a person into marriage.

Schools and colleges can play an important role in safeguarding children from forced marriage. The Forced Marriage Unit (FMU) has created: Multi-agency practice guidelines: handling cases of forced marriage and, Multi-agency statutory guidance for dealing with forced marriage, which can both be found at The right to choose: government guidance on forced marriage - GOV.UK (www.gov.uk)

Where staff have concerns in relation to forced marriage, they will speak to the DSL immediately.

The DSL will contact the Forced Marriage Unit if they need advice or information: 020 7008 0151 or email fmu@fcdo.gov.uk.

Allegations against staff (including low-level concerns) policy

Section 1: allegations that may meet the harm threshold

This section applies to all cases in which it is alleged that a current member of staff, including a supply teacher, volunteer or contractor, has:

- › Behaved in a way that has harmed a child, or may have harmed a child, and/or
- › Possibly committed a criminal offence against or related to a child, and/or
- › Behaved towards a child or children in a way that indicates they may pose a risk of harm to children, and/or
- › Behaved or may have behaved in a way that indicates they may not be suitable to work with children – this includes behaviour taking place both inside and outside of school

If we're in any doubt as to whether a concern meets the harm threshold, we will consult our local authority designated officer (LADO).

We will deal with any allegation of abuse quickly, in a fair and consistent way that provides effective child protection while also supporting the individual who is the subject of the allegation.

A 'case manager' will lead any investigation. This will be the headteacher, or the chair of governors where the headteacher is the subject of the allegation. The case manager will be identified at the earliest opportunity.

Our procedures for dealing with allegations will be applied with common sense and judgement.

If we receive an allegation of an incident happening while an individual or organisation was using the school premises to run activities for children, we will follow our safeguarding policies and procedures and inform our LADO.

Suspension of the accused until the case is resolved

Suspension of the accused will not be the default position, and will only be considered in cases where there is reason to suspect that a child or other children is/are at risk of harm, or the case is so serious that there might be grounds for dismissal. In such cases, we will only suspend an individual if we have considered all other options available and there is no reasonable alternative.

Based on an assessment of risk, we will consider alternatives such as:

- › Redeployment within the school so that the individual does not have direct contact with the child or children concerned
- › Providing an assistant to be present when the individual has contact with children
- › Redeploying the individual to alternative work in the school so that they do not have unsupervised access to children
- › Moving the child or children to classes where they will not come into contact with the individual, making it clear that this is not a punishment and parents/carers have been consulted
- › Temporarily redeploying the individual to another role in a different location, for example to an alternative school or other work for the local authority

If in doubt, the case manager will seek views from the school's personnel adviser and the designated officer at the local authority, as well as the police and children's social care where they have been involved.

Definitions for outcomes of allegation investigations

- › **Substantiated:** there is sufficient evidence to prove the allegation
- › **Malicious:** there is sufficient evidence to disprove the allegation and there has been a deliberate act to deceive, or to cause harm to the subject of the allegation
- › **False:** there is sufficient evidence to disprove the allegation
- › **Unsubstantiated:** there is insufficient evidence to either prove or disprove the allegation (this does not imply guilt or innocence)
- › **Unfounded:** to reflect cases where there is no evidence or proper basis which supports the allegation being made

Procedure for dealing with allegations

In the event of an allegation that meets the criteria above, the case manager will take the following steps:

- › Conduct basic enquiries in line with local procedures to establish the facts to help determine whether there is any foundation to the allegation before carrying on with the steps below
- › Discuss the allegation with the designated officer at the local authority. This is to consider the nature, content and context of the allegation and agree a course of action, including whether further enquiries are necessary to enable a decision on how to proceed, and whether it is necessary to involve the police and/or children's social care services. (The case manager may, on occasion, consider it necessary to involve the police *before* consulting the designated officer – for example, if the accused individual is deemed to be an immediate risk to children or there is evidence of a possible criminal offence. In such cases, the case manager will notify the designated officer as soon as practicably possible after contacting the police)
- › Inform the accused individual of the concerns or allegations and likely course of action as soon as possible after speaking to the designated officer (and the police or children's social care services, where necessary). Where the police and/or children's social care services are involved, the case manager will only share such information with the individual as has been agreed with those agencies
- › Where appropriate (in the circumstances described above), carefully consider whether suspension of the individual from contact with children at the school is justified or whether alternative arrangements such as those outlined above can be put in place. Advice will be sought from the designated officer, police and/or children's social care services, as appropriate
- › Where the case manager is concerned about the welfare of other children in the community or the individual's family, they will discuss these concerns with the DSL and make a risk assessment of the situation. If necessary, the DSL may make a referral to children's social care
- › **If immediate suspension is considered necessary**, agree and record the rationale for this with the designated officer. The record will include information about the alternatives to suspension that have been considered, and why they were rejected. Written confirmation of the suspension will be provided to the individual facing the allegation or concern within 1 working day, and the individual will be given a named contact at the school and their contact details
- › **If it is decided that no further action is to be taken** in regard to the subject of the allegation or concern, record this decision and the justification for it and agree with the designated officer what information should be put in writing to the individual and by whom, as well as what action should follow both in respect of the individual and those who made the initial allegation
- › **If it is decided that further action is needed**, take steps as agreed with the designated officer to initiate the appropriate action in school and/or liaise with the police and/or children's social care services as appropriate
- › Provide effective support for the individual facing the allegation or concern, including appointing a named representative to keep them informed of the progress of the case and considering what other support is appropriate such as providing information to access the EAP (Employee Assistance Programme) or referring to occupational health for counselling services.

- › Inform the parents or carers of the child/children involved about the allegation as soon as possible if they do not already know (following agreement with children's social care services and/or the police, if applicable). The case manager will also inform the parents or carers of the requirement to maintain confidentiality about any allegations made against teachers (where this applies) while investigations are ongoing. Any parent or carer who wishes to have the confidentiality restrictions removed in respect of a teacher will be advised to seek legal advice
- › Keep the parents or carers of the child/children involved informed of the progress of the case (only in relation to their child – no information will be shared regarding the staff member)
- › Make a referral to the DBS where it is thought that the individual facing the allegation or concern has engaged in conduct that harmed or is likely to harm a child, or if the individual otherwise poses a risk of harm to a child

We will inform Ofsted of any allegations of serious harm or abuse by any person living, working, or looking after children at the premises (whether the allegations relate to harm or abuse committed on the premises or elsewhere), and any action taken in respect of the allegations. This notification will be made as soon as reasonably possible and always within 14 days of the allegations being made.

If the school is made aware that the secretary of state has made an interim prohibition order in respect of an individual, we will immediately suspend that individual from teaching, pending the findings of the investigation by the Teaching Regulation Agency.

Where the police are involved, wherever possible the school will ask the police at the start of the investigation to obtain consent from the individuals involved to share their statements and evidence for use in the school's disciplinary process, should this be required at a later point.

Additional considerations for supply teachers and all contracted staff

If there are concerns or an allegation is made against someone not directly employed by the school, such as a supply teacher or contracted staff member provided by an agency, we will take the actions below in addition to our standard procedures.

- › We will not decide to stop using an individual due to safeguarding concerns without finding out the facts and liaising with our LADO to determine a suitable outcome
- › The governing board will discuss with the agency whether it is appropriate to suspend the individual, or redeploy them to another part of the school, while the school carries out the investigation
- › We will involve the agency fully, but the school will take the lead in collecting the necessary information and providing it to the LADO as required
- › We will address issues such as information sharing, to ensure any previous concerns or allegations known to the agency are taken into account (we will do this, for example, as part of the allegations management meeting or by liaising directly with the agency where necessary)

When using an agency, we will inform them of our process for managing allegations, and keep them updated about our policies as necessary, and will invite the agency's HR manager or equivalent to meetings as appropriate.

Timescales

We will deal with all allegations as quickly and effectively as possible and will endeavour to comply with the following timescales, where reasonably practicable:

- › Any cases where it is clear immediately that the allegation is unsubstantiated or malicious should be resolved within 1 week
- › If the nature of an allegation does not require formal disciplinary action, appropriate action should be taken within 3 working days
- › If a disciplinary hearing is required and can be held without further investigation, this should be held within 15 working days

However, these are objectives only and where they are not met, we will endeavour to take the required action as soon as possible thereafter.

Specific actions

Action following a criminal investigation or prosecution

The case manager will discuss with the local authority's designated officer whether any further action, including disciplinary action, is appropriate and, if so, how to proceed, taking into account information provided by the police and/or children's social care services.

Conclusion of a case where the allegation is substantiated

If the allegation is substantiated and the individual is dismissed or the school ceases to use their services, or the individual resigns or otherwise ceases to provide their services, the school will make a referral to the DBS for consideration of whether inclusion on the barred lists is required.

If the individual concerned is a member of teaching staff, the school will consider whether to refer the matter to the Teaching Regulation Agency to consider prohibiting the individual from teaching.

Individuals returning to work after suspension

If it is decided on the conclusion of a case that an individual who has been suspended can return to work, the case manager will consider how best to facilitate this.

The case manager will also consider how best to manage the individual's contact with the child or children who made the allegation, if they are still attending the school.

Unsubstantiated, unfounded, false or malicious reports

If a report is:

- › Determined to be unsubstantiated, unfounded, false or malicious, the DSL will consider the appropriate next steps. If they consider that the child and/or person who made the allegation is in need of help, or the allegation may have been a cry for help, a referral to children's social care may be appropriate
- › Shown to be deliberately invented, or malicious, the school will consider whether any disciplinary action is appropriate against the individual(s) who made it

Unsubstantiated, unfounded, false or malicious allegations

If an allegation is:

- › Determined to be unsubstantiated, unfounded, false or malicious, the LADO and case manager will consider the appropriate next steps. If they consider that the child and/or person who made the allegation is in need of help, or the allegation may have been a cry for help, a referral to children's social care may be appropriate
- › Shown to be deliberately invented, or malicious, the school will consider whether any disciplinary action is appropriate against the individual(s) who made it

Confidentiality and information sharing

The school will make every effort to maintain confidentiality and guard against unwanted publicity while an allegation is being investigated or considered.

The case manager will take advice from the LADO, police and children's social care services, as appropriate, to agree:

- Who needs to know about the allegation and what information can be shared
- How to manage speculation, leaks and gossip, including how to make parents or carers of a child/children involved aware of their obligations with respect to confidentiality
- What, if any, information can be reasonably given to the wider community to reduce speculation
- How to manage press interest if, and when, it arises

Record-keeping

The case manager will maintain clear records about any case where the allegation or concern meets the criteria above and store them on the individual's confidential personnel file for the duration of the case.

The records of any allegation that, following an investigation, is found to be malicious or false will be deleted from the individual's personnel file (unless the individual consents for the records to be retained on the file).

For all other allegations (which are not found to be malicious or false), the following information will be kept on the file of the individual concerned:

- A clear and comprehensive summary of the allegation
- Details of how the allegation was followed up and resolved
- Notes of any action taken, decisions reached and the outcome
- A declaration on whether the information will be referred to in any future reference

In these cases, the school will provide a copy to the individual, in agreement with children's social care or the police as appropriate.

We will retain all records at least until the accused individual has reached normal pension age, or for 10 years from the date of the allegation if that is longer.

References

When providing employer references, we will:

- › Not refer to any allegation that has been found to be false, unfounded, unsubstantiated or malicious, or any repeated allegations which have all been found to be false, unfounded, unsubstantiated or malicious
- › Include substantiated allegations, provided that the information is factual and does not include opinions

Learning lessons

After any cases where the allegations are *substantiated*, the case manager will review the circumstances of the case with the local authority's designated officer to determine whether there are any improvements that we can make to the school's procedures or practice to help prevent similar events in the future.

This will include consideration of (as applicable):

- Issues arising from the decision to suspend the member of staff
- The duration of the suspension
- Whether or not the suspension was justified
- The use of suspension when the individual is subsequently reinstated. We will consider how future investigations of a similar nature could be carried out without suspending the individual

For all other cases, the case manager will consider the facts and determine whether any improvements can be made.

Non-recent allegations

Abuse can be reported, no matter how long ago it happened.

We will report any non-recent allegations made by a child to the LADO in line with our local authority's procedures for dealing with non-recent allegations.

Where an adult makes an allegation to the school that they were abused as a child, we will advise the individual to report the allegation to the police.

Section 2: concerns that do not meet the harm threshold

This section applies to all concerns (including allegations) about members of staff, including supply teachers, volunteers and contractors, which do not meet the harm threshold set out in section 1 above.

Concerns may arise through, for example:

- › Suspicion
- › Complaint
- › Safeguarding concern or allegation from another member of staff
- › Disclosure made by a child, parent or other adult within or outside the school
- › Pre-employment vetting checks

We recognise the importance of responding to and dealing with any concerns in a timely manner to safeguard the welfare of children.

Definition of low-level concerns

The term 'low-level' concern is any concern – no matter how small – that an adult working in or on behalf of the school may have acted in a way that:

- › Is inconsistent with the staff code of conduct, including inappropriate conduct outside of work, **and**
- › Does not meet the allegations threshold or is otherwise not considered serious enough to consider a referral to the designated officer at the local authority

Examples of such behaviour could include, but are not limited to:

- › Being overly friendly with children
- › Having favourites
- › Taking photographs of children on their mobile phone
- › Engaging with a child on a one-to-one basis in a secluded area or behind a closed door
- › Humiliating pupils

Sharing low-level concerns

We recognise the importance of creating a culture of openness, trust and transparency to encourage all staff to confidentially share low-level concerns so that they can be addressed appropriately.

We will create this culture by:

- › Ensuring staff are clear about what appropriate behaviour is, and are confident in distinguishing expected and appropriate behaviour from concerning, problematic or inappropriate behaviour, in themselves and others
- › Empowering staff to share any low-level concerns as per section 7.7 of this policy
- › Empowering staff to self-refer
- › Addressing unprofessional behaviour and supporting the individual to correct it at an early stage
- › Providing a responsive, sensitive and proportionate handling of such concerns when they are raised
- › Helping to identify any weakness in the school's safeguarding system

Responding to low-level concerns

If the concern is raised via a third party, the headteacher will collect evidence where necessary by speaking:

- › Directly to the person who raised the concern, unless it has been raised anonymously
- › To the individual involved and any witnesses

The headteacher will use the information collected to categorise the type of behaviour and determine any further action, in line with the school's staff code of conduct. The headteacher will be the ultimate decision-maker in respect of all low-level concerns, though they may wish to collaborate with the DSL.

Further information can be found in: [Developing and implementing a low-level concerns policy: A guide for organisations which work with children](#)

Record keeping

All low-level concerns will be recorded in writing. In addition to details of the concern raised, records will include the context in which the concern arose, any action taken and the rationale for decisions and action taken.

Records will be:

- › Kept confidential, held securely and comply with the DPA 2018 and UK GDPR
- › Reviewed so that potential patterns of concerning, problematic or inappropriate behaviour can be identified. Where a pattern of such behaviour is identified, we will decide on a course of action, either through our disciplinary procedures or, where a pattern of behaviour moves from a concern to meeting the harm threshold as described in section 1 of this appendix, we will refer it to the designated officer at the local authority
- › Retained at least until the individual leaves employment at the school

Where a low-level concern relates to a supply teacher or contractor, we will notify the individual's employer, so any potential patterns of inappropriate behaviour can be identified.

References

We will not include low-level concerns in references unless:

- › The concern (or group of concerns) has met the threshold for referral to the designated officer at the local authority and is found to be substantiated; and/or
- › The concern (or group of concerns) relates to issues which would ordinarily be included in a reference, such as misconduct or poor performance